

Emily Deach

Subject: Ore Dock Approach Slab Handrail
Attachments: 2024-061 Jesse Proposal Letter 05292024.pdf; 2024-05-21_Skagway CDT Approach Slab Railing AP Markups.pdf

From: Cody Jennings
Sent: Wednesday, May 29, 2024 2:55 PM
To: Brad Ryan <manager@skagway.org>
Subject: FW: Ore Dock Approach Slab Handrail

I would recommend we go with the 18' railing option This helps address safety and security issues associated with dock access.

Cody Jennings
Port Director – Municipality of Skagway
p: 907.983.2297 m. 907.612.1093
w: skagway.org e: c.jennings@skagway.org



PUBLIC RECORDS LAW DISCLOSURE: This e-mail and responses to this email are subject to provisions of the Alaska Statutes and may be made available to the public upon request.

From: Patrick Young
Sent: Wednesday, May 29, 2024 10:17 AM
To: Cody Jennings <C.Jennings@skagway.org>
Cc: Ed DeBroeck; Ross Hunnicutt
Subject: RE: [External Email] Ore Dock Approach Slab Handrail

Cody,

Please find attached the quote from Jesse for the approach slab handrail.

The below prices do not include the cost of shipping, sales tax, the timbers for the bullrail, or the fasteners into the timber or concrete.

The second attachment is the drawing package we sent to Jesse with their markups added.

12' railing option – \$35,590

18' railing option – \$48,140

Please let Ed or me know if you have any questions and how you'd like to proceed.

Thank you,



May 29, 2024

KPFF

Attn: Patrick Young

Re: Skagway Ore Peninsula Redevelopment
Skagway, AK

Ref. Jesse Bid File No. 2024-061

Dear Patrick,

Jesse Co. an AISC certified steel fabricator, is pleased to offer following pricing as listed below. The materials, fabrication methods, and coatings are per the project design documents, except as noted herein.

Option 1; CDT 12FT RAILS, per attached plan drawings S3.00-S3.29:

- (1) RH 12' Bullrail mounted Railing (hdg), 6' post to post CL, includes:
 - (1)ea, 2' 2" Luminaire Post, with cover plate, gasket
 - (2)ea, 2' 2" H Post
 - (2)ea, 6' Railing Channel, shim washers, fasteners
 - (2)ea, 3" X 3" X .192" Wire Mesh Infill Panel, rubber washers, fasteners
- (1) LH 12' Bullrail mounted Railing (hdg), 6' post to post CL, includes:
 - (1)ea, 2' 2" Luminaire Post, with cover plate, gasket
 - (2)ea, 2' 2" H Post
 - (2)ea, 6' Railing Channel, shim washers, fasteners
 - (2)ea, 3" X 3" X .192" Wire Mesh Infill Panel, rubber washers, fasteners
- (4)ea, 8" Pipe X 4-1/2" Bullrail Supports (hdg)
- (2)ea, HSS Trestle Transition Plate Guards (hdg), A2.11/Det. 3
- (2)ea, HSS Ramp Entrance Guards (hdg), A2.11/ Det. 7

Estimated Weight: 1,515#

Price: \$35,590

Option 2; CDT 18FT RAILS, per attached plan drawings S3.00-S3.29:

- (1) RH 18' Bullrail mounted Railing (hdg), 6' post to post CL, includes:
 - (2)ea, 2' 2" Luminaire Post, with cover plate, gasket
 - (2)ea, 2' 2" H Post
 - (2)ea, 6' Railing Channel, shim washers, fasteners
 - (2)ea, 3" X 3" X .192" Wire Mesh Infill Panel, rubber washers, fasteners
- (1) LH 18' Bullrail mounted Railing (hdg), 6' post to post CL, includes:
 - (2)ea, 2' 2" Luminaire Post, with cover plate, gasket
 - (2)ea, 2' 2" H Post
 - (2)ea, 6' Railing Channel, shim washers, fasteners
 - (2)ea, 3" X 3" X .192" Wire Mesh Infill Panel, rubber washers, fasteners
- (6)ea, 8" Pipe X 4-1/2" Bullrail Supports (hdg)
- (2)ea, HSS Trestle Transition Plate Guards (hdg), A2.11/Det. 3

FABRICATION MACHINERY EQUIPMENT

O: 253-922-7433 / F: 253-922-1998 / 1840 MARINE VIEW DRIVE, TACOMA WA 98422



(2)ea, HSS Ramp Entrance Guards (hdg), A2.11/ Det. 7

Estimated Weight: 1,735#

Price: \$48,140

Delivery: Per Mutual Agreement

FOB: Truck, Jesse Co yard, Tacoma WA

Validity: Jesse quoted price is valid for 30 days from date of proposal.

Project specific notes and exclusions:

1. No Addenda noted.
2. Price excludes taxes.
3. Foreign material is acceptable.
4. All hardware supplied with hot dip galvanized coating.
5. All Fasteners into or through wood and concrete, supplied by Others.
6. All hardware shipped loose.

Thank you for the opportunity to provide this bid proposal. If you have any questions, please feel free to contact me at any time via telephone or e-mail.

Respectfully,

Alex Perez
Project Manager
aperez@jesse-co.com
Jesse Co.

Attn: Jesse Co. Standard exclusions, terms, and Special Notice (attached) form a part of this bid proposal.



Standard Exclusions applicable unless otherwise stated above:

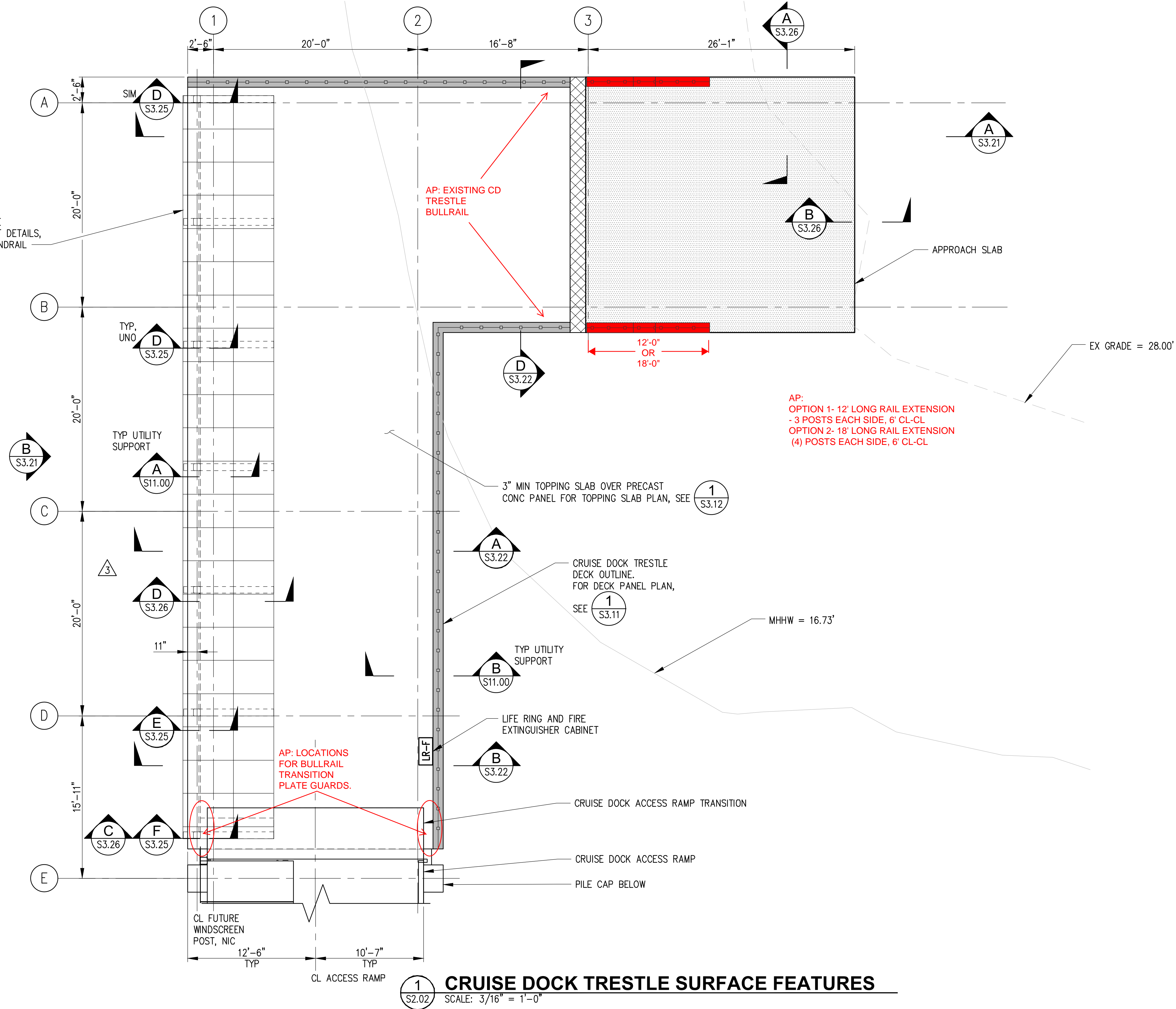
- Field measuring
- Engineering designs, calculations and other professional engineer services
- Retention
- Liquidated damages
- Bond
- Sales Tax
- Anything not specifically listed as included is excluded.

Standard Terms, applicable unless otherwise stated above:

1. Pricing of the bid items is based on “all or nothing” scope of purchase, at the quantities shown.
2. Jesse is not offering to proceed on receipt of a “notice to proceed”.
3. Payment terms are: Monthly progress payments based on costs incurred plus mark-up, including but not limited to materials on hand, labor expended, and shop drawings prepared, against Jesse invoice for same, net 30 days, no retention.
4. F.O.B. point is dockside or truck Jesse Co., 1840 Marine View Dr., Tacoma, WA, 98422.
5. This bid proposal, is contingent on the customer’s/buyer’s account with Jesse Co. being current as analyzed by Jesse, and its validity is 30 days.
6. Bid proposals are based on the negotiation of mutually acceptable “Material Supply” contract terms and schedule; hence, Jesse Co. does not agree to be bound by all the terms in the agreement included with the RFP or bid documents.
7. Limitation of Liability: Jesse Co.’s maximum liability in any claim related to non-performance or delayed performance/delivery of the supply is limited to the specific bid item price in contention. In no event shall Jesse be liable for consequential, incidental, punitive, special, exemplary or indirect damages or expenses.
8. Should changes in scope or schedule be requested, Jesse at its option, may comply with such requests if and when buyer provides a written change order with the mutually negotiated pricing changes (if any) contained therein.
9. Should the buyer not take delivery of the goods at the time specified, Jesse reserves the right to charge storage fees in the amount of 1.5% of the related bid item price(s) per month.
10. Warranty – Jesse warrants products delivered for a period of one year against defects in materials and workmanship. Repair or replacement of defects/defective items (at Jesse’s sole option) is offered provided buyer returns said item to the original f.o.b. point. In cases where impractical Jesse offers reimbursement in an amount estimated by Jesse to be cost incurred to repair/replace if said item was returned to the f.o.b. point for repair at Jesse. Repaired/replaced items will be delivered to the original f.o.b. point. Re-installation is not included in this warranty.
11. In the result of a contract, Jesse will agree to indemnify, hold harmless and defend Owner/Contractor against all third-party claims, resulting from willful misconduct or gross negligence by Jesse. **This is the EXTENT of Jesse’s indemnification.**
12. Incomplete Contract Plans/Specs - If the contract plans are incomplete or lack necessary information (in minor matters as determined by Jesse), Jesse shop drawings, approved by buyer or owner, providing said completed detailed information are deemed as compliant to contract requirements.

Plotted: Jul 20, 2023 - 7:48pm
 M:\2021\2100135 Skagway Ore Peninsula Multi-use Dock Drawings\Current\2100135_S3.00 Cruise Dock Trestle Surface Features Plan.dwg
 dyu Layout: S3.00

SEE ARCH FOR FUTURE WINDSCREEN AND ROOF DETAILS, NIC BULLRAIL WITH HANDRAIL

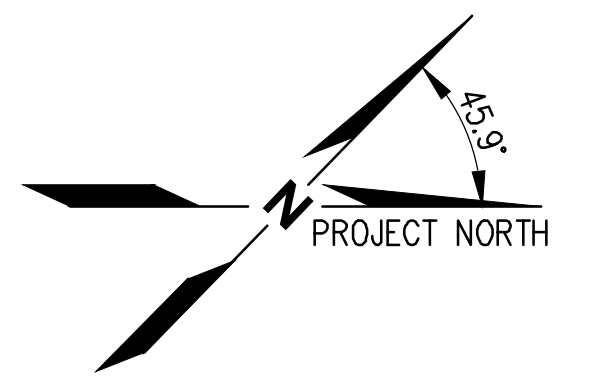


LEGEND

	BULLRAIL WITH FIXED HANDRAIL
	EXPANSION JOINT, SEE 1 S3.27
	APPROACH SLAB
	LIFE RING AND FIRE EXTINGUISHER CABINET
	CONCRETE EMBEDS FOR UTILITY SUPPORTS 1/S11.00

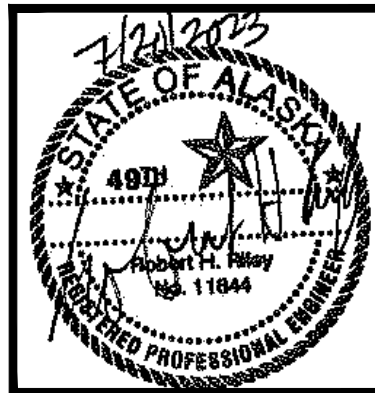
AP:
 OPTION 1- 12' LONG RAIL EXTENSION
 - 3 POSTS EACH SIDE, 6' CL-CL
 OPTION 2- 18' LONG RAIL EXTENSION
 (4) POSTS EACH SIDE, 6' CL-CL

1 S2.02 **CRUISE DOCK TRESTLE SURFACE FEATURES**
 SCALE: 3/16" = 1'-0"



kpff

1601 5th Avenue, Suite 1300
 Seattle, Washington 98101
 (206) 382-0600 Fax (206) 382-0500



NO.	DATE	BY	REVISION

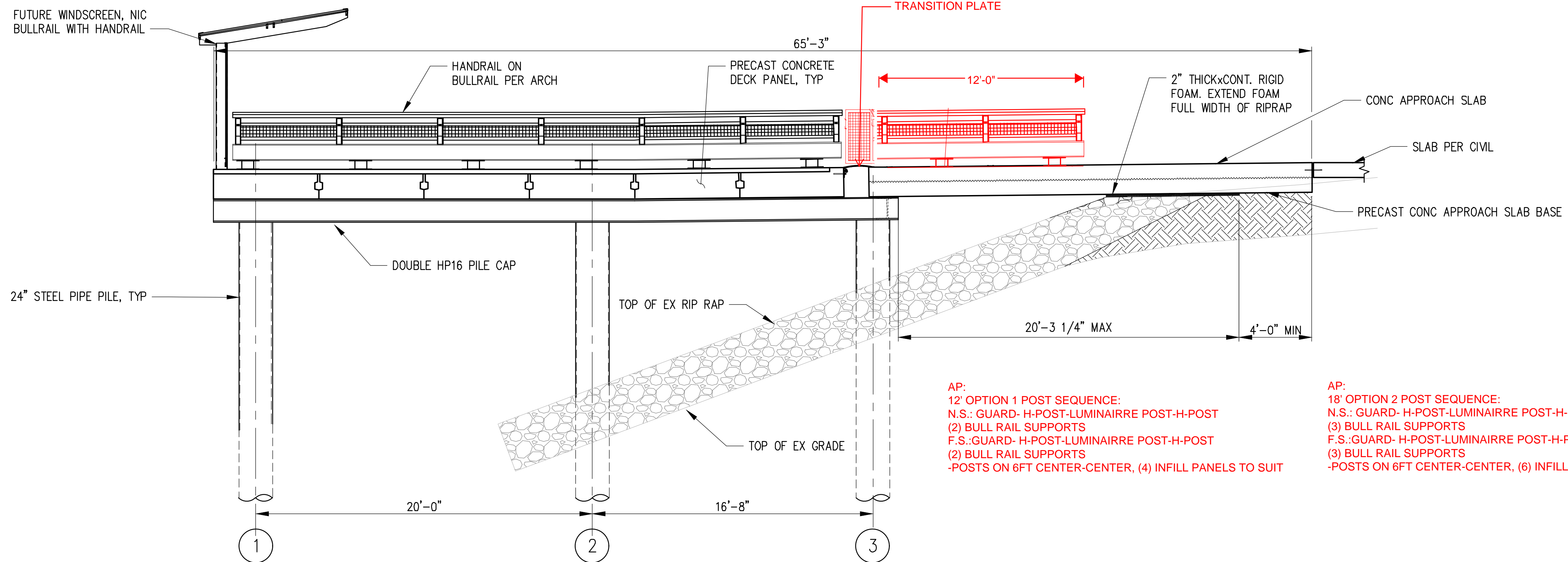


ORE PENINSULA REDEVELOPMENT

CRUISE DOCK TRESTLE SURFACE FEATURES PLAN

DRAWN: JH	PROJECT NO.: 2100135
DESIGN: KPT	SCALE: AS SHOWN
CHECKED: RR	DATE: 07/21/2023
DRAWING NO.	S3.00
SHEET NO.	176 OF 381

NOT FOR CONSTRUCTION



AP:
 12' OPTION 1 POST SEQUENCE:
 N.S.: GUARD- H-POST-LUMINAIRRE POST-H-POST
 (2) BULL RAIL SUPPORTS
 F.S.: GUARD- H-POST-LUMINAIRRE POST-H-POST
 (2) BULL RAIL SUPPORTS
 -POSTS ON 6FT CENTER-CENTER, (4) INFILL PANELS TO SUIT

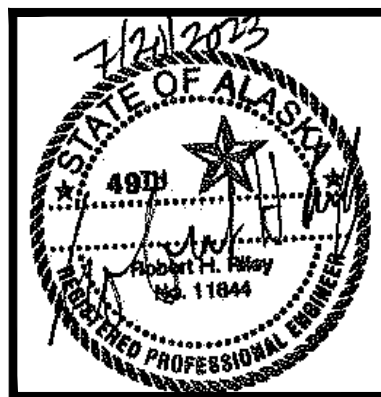
AP:
 18' OPTION 2 POST SEQUENCE:
 N.S.: GUARD- H-POST-LUMINAIRRE POST-H-POST-LUMINAIRRE POST
 (3) BULL RAIL SUPPORTS
 F.S.: GUARD- H-POST-LUMINAIRRE POST-H-POST-LUMINAIRRE POST
 (3) BULL RAIL SUPPORTS
 -POSTS ON 6FT CENTER-CENTER, (6) INFILL PANELS TO SUIT

A CRUISE DOCK TRESTLE CROSS SECTION
 S3.00, S3.10, - SCALE: 1/4" = 1'-0"

Plotted: Jul 20, 2023 - 7:50pm
 M:\2023\2100135 Skagway Ore Peninsula Multi-use Dock Drawings\Current\2100135_S3.21 Cruise Dock Trestle Sections.dwg
 dym Layout: S3.21



1601 5th Avenue, Suite 1300
 Seattle, Washington 98101
 (206) 382-0600 Fax (206) 382-0500



NO.	DATE	BY	REVISION

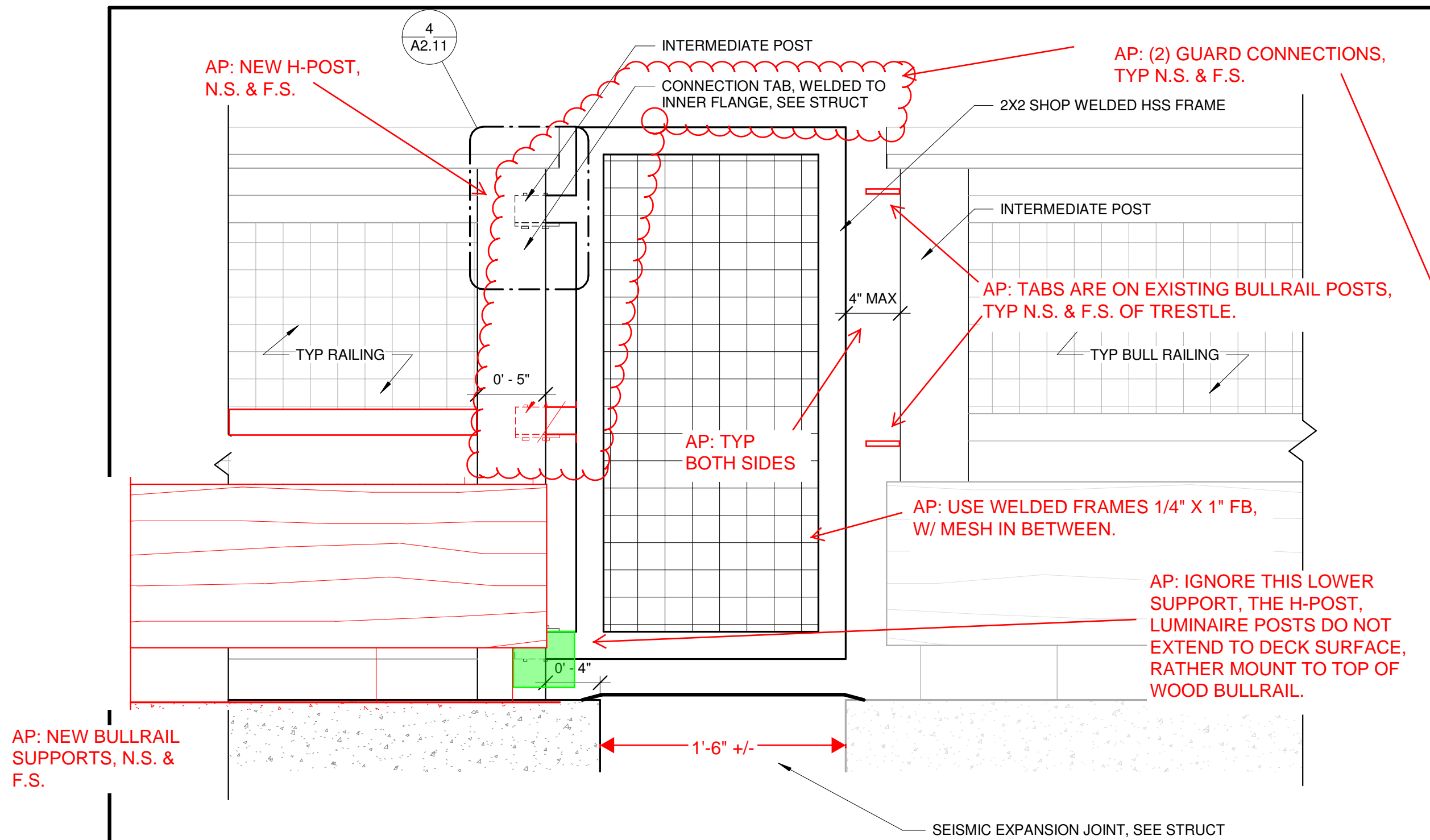


ORE PENINSULA REDEVELOPMENT

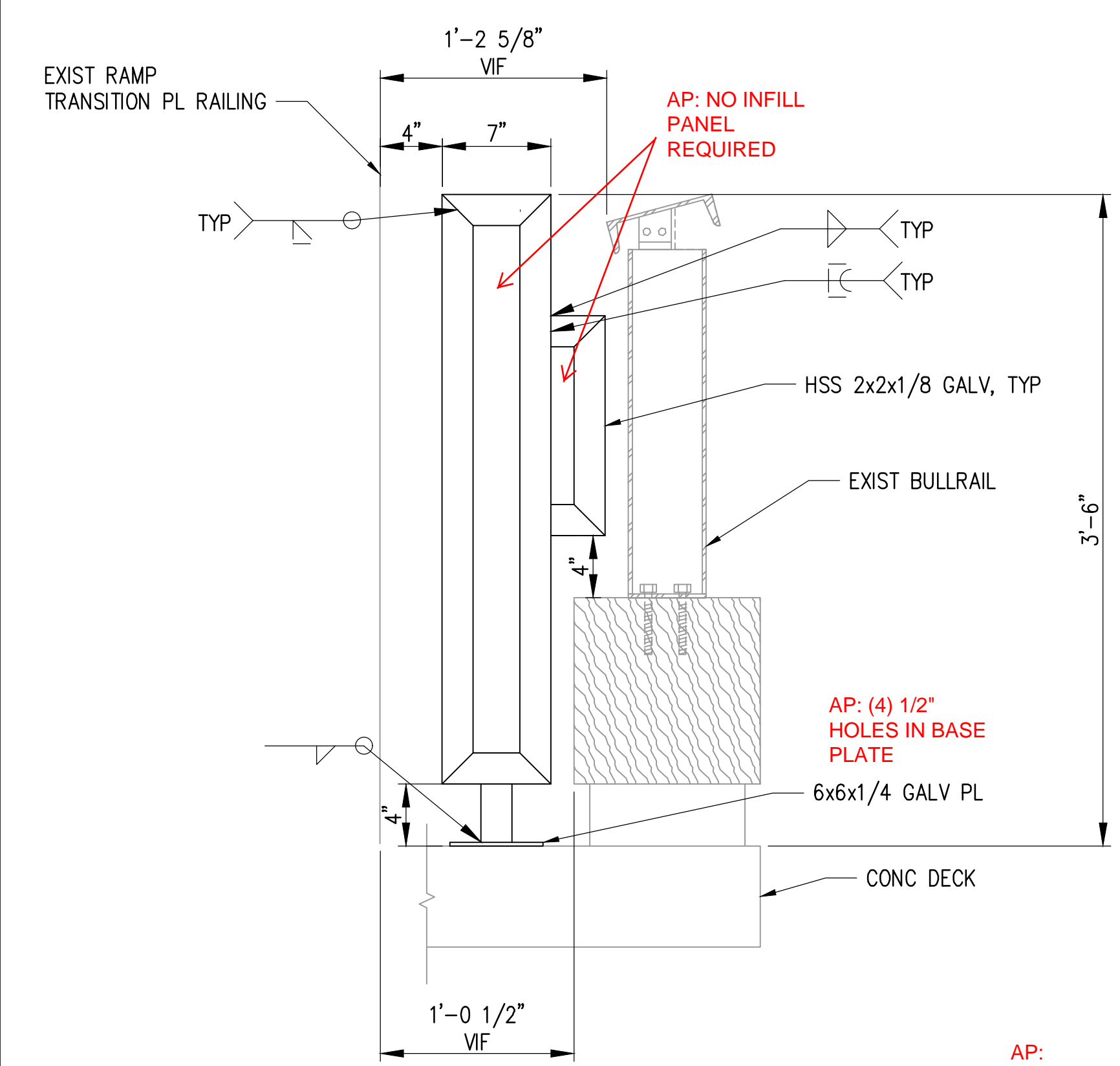
CRUISE DOCK TRESTLE SECTIONS

DRAWN: JH	PROJECT NO.: 2100135
DESIGN: KPT	SCALE: AS SHOWN
CHECKED: RR	DATE: 07/21/2023
DRAWING NO.	S3.21
SHEET NO.	181 OF 381

NOT FOR CONSTRUCTION

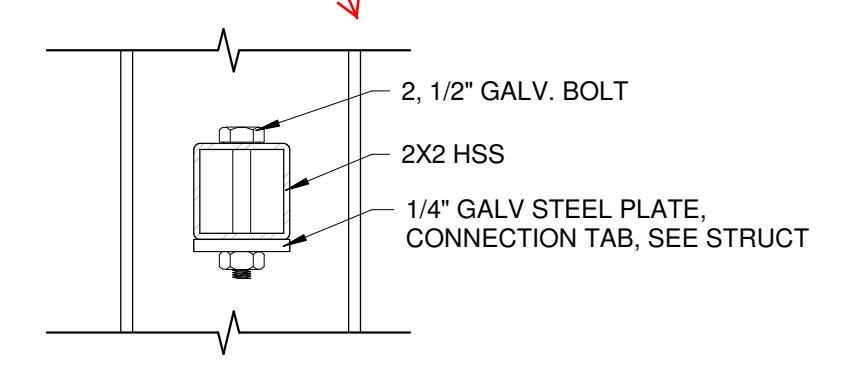


3 EXPANSION JOINT RAILING
 1 1/2" = 1'-0"



7 BULL RAIL @ TRANSITION PLATE
 1 1/2" = 1'-0"

AP:
 (1) AS SHOWN
 (1) OPPOSITE
 - GUARDS ARE LOCATED AT RAMP ENTRANCE.



4 EXPANSION JOINT RAILING CONNECTION
 3" = 1'-0"

7/20/2023 3:05:57 PM C:\Users\colter\OneDrive\Documents\Railing Drawings_Cent_20 JUL 2023_colter\AVGK.rvt

kpff
 1601 5th Avenue, Suite 1300
 Seattle, Washington 98101
 (206) 382-0600 Fax (206) 382-0500

MRV
 ARCHITECTS
 ARCHITECTURE · PLANNING · INTERIORS
 420 Glacier Ave STE 101
 Juneau, AK 99801
 (907) 596-1371



NO.	DATE	BY	REVISION

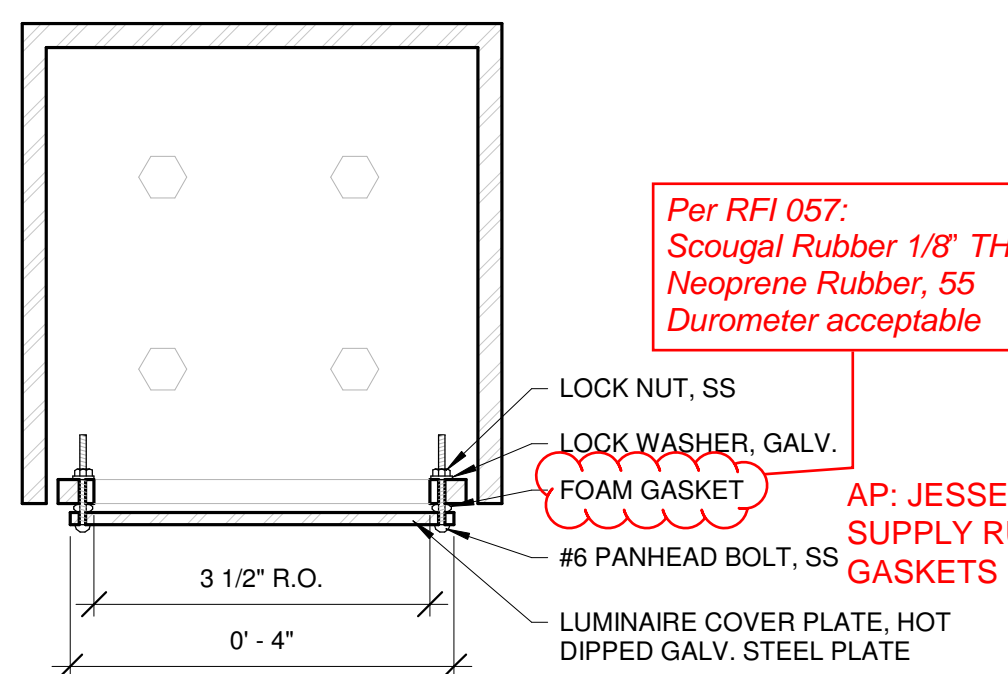


ORE PENINSULA REDEVELOPMENT
SKAGWAY, ALASKA

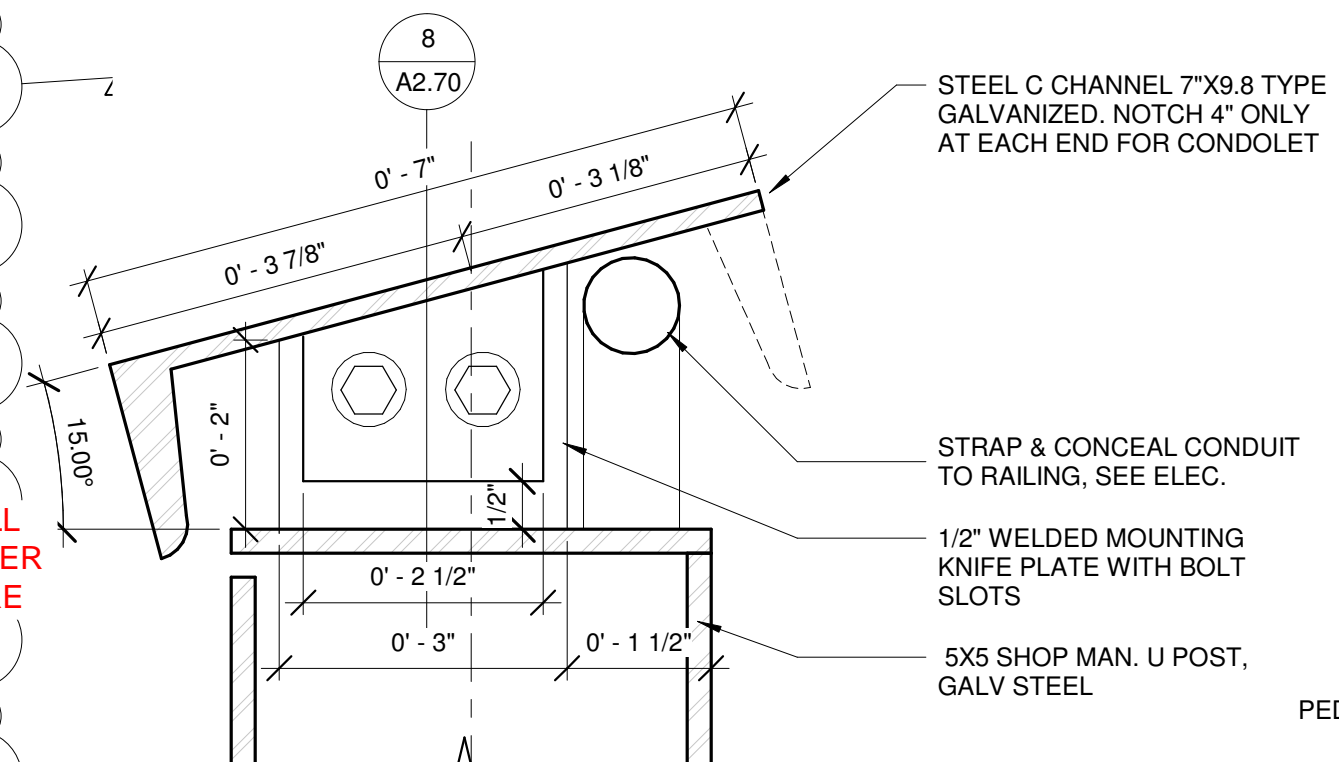
SEAWALK BENCHES
PLAN, EXPANSION
JOINT, AND CORNERS

DRAWN: MRV	PROJECT NO.:
DESIGN: PV	SCALE: AS SHOWN
CHECKED: PV	DATE: 7/21/2023
DRAWING NO.	A2.11
SHEET NO.	54 OF 381

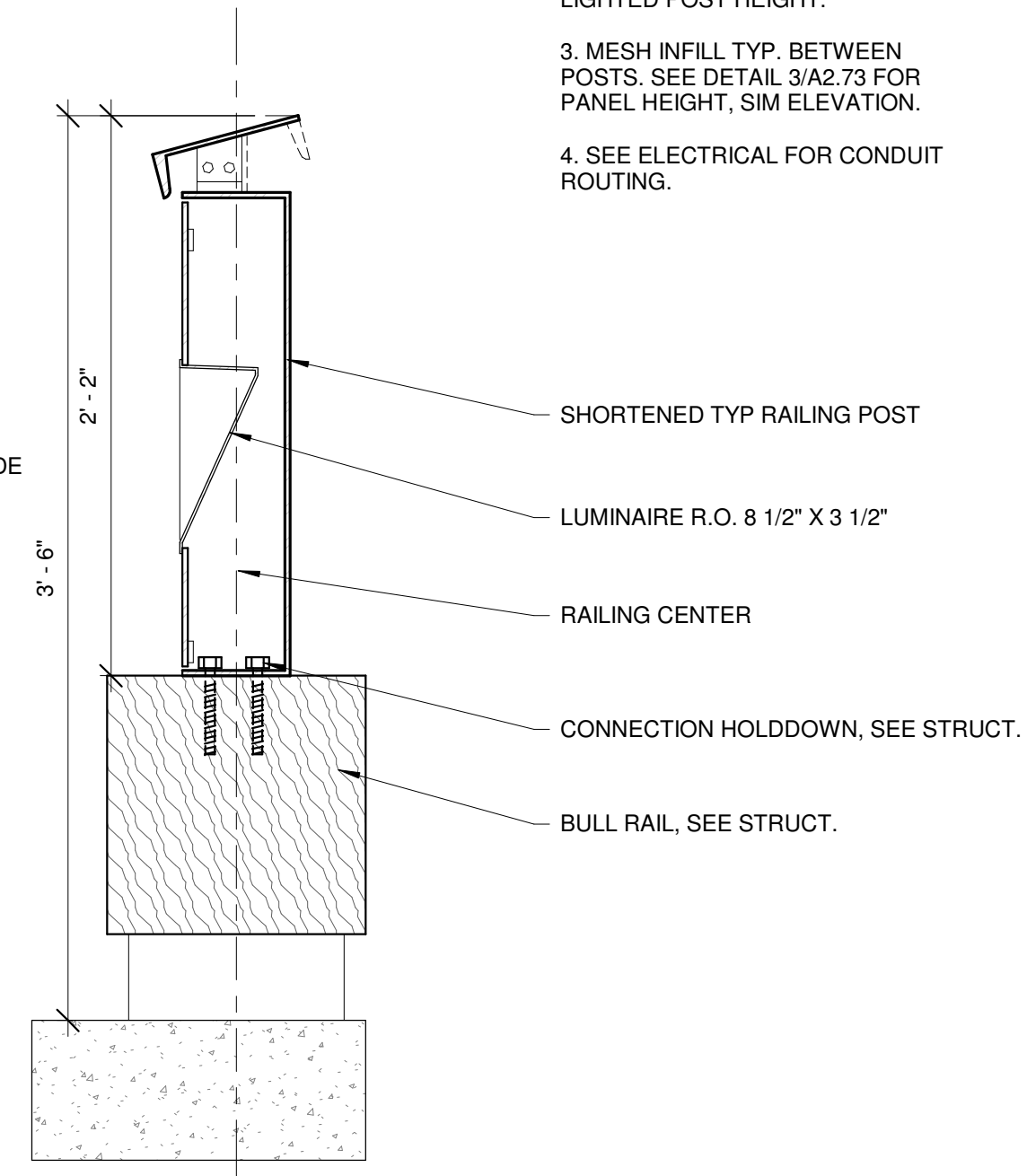
NOT FOR CONSTRUCTION



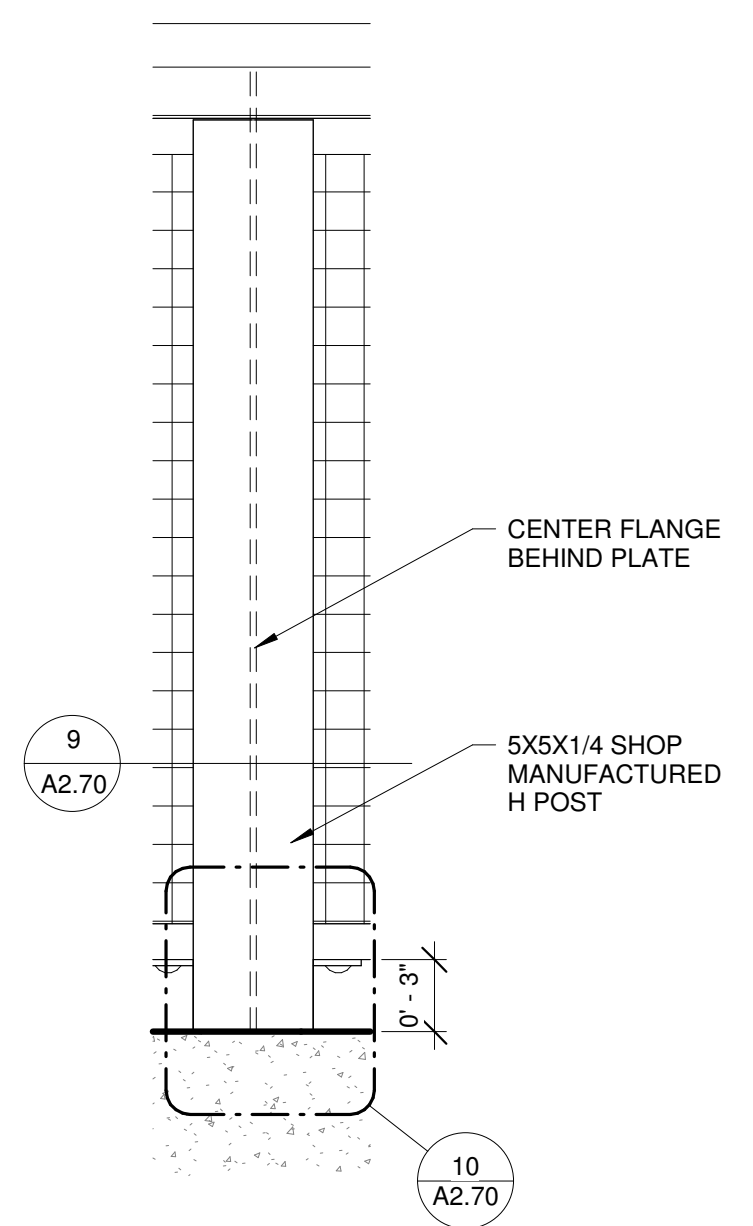
11 COVER PLATE PLAN SECTION
6" = 1'-0"



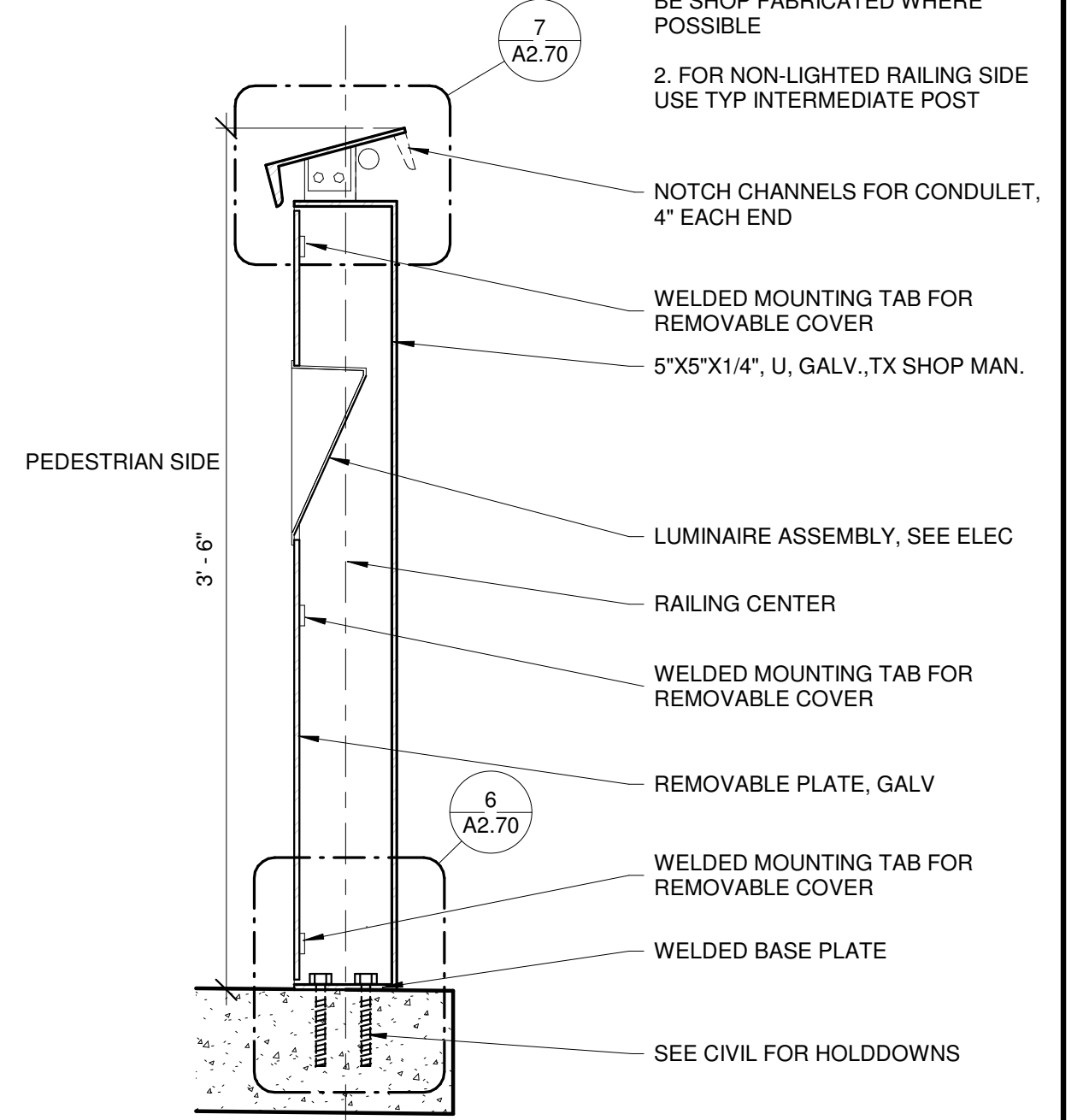
7 TOP RAIL DETAIL
6" = 1'-0"



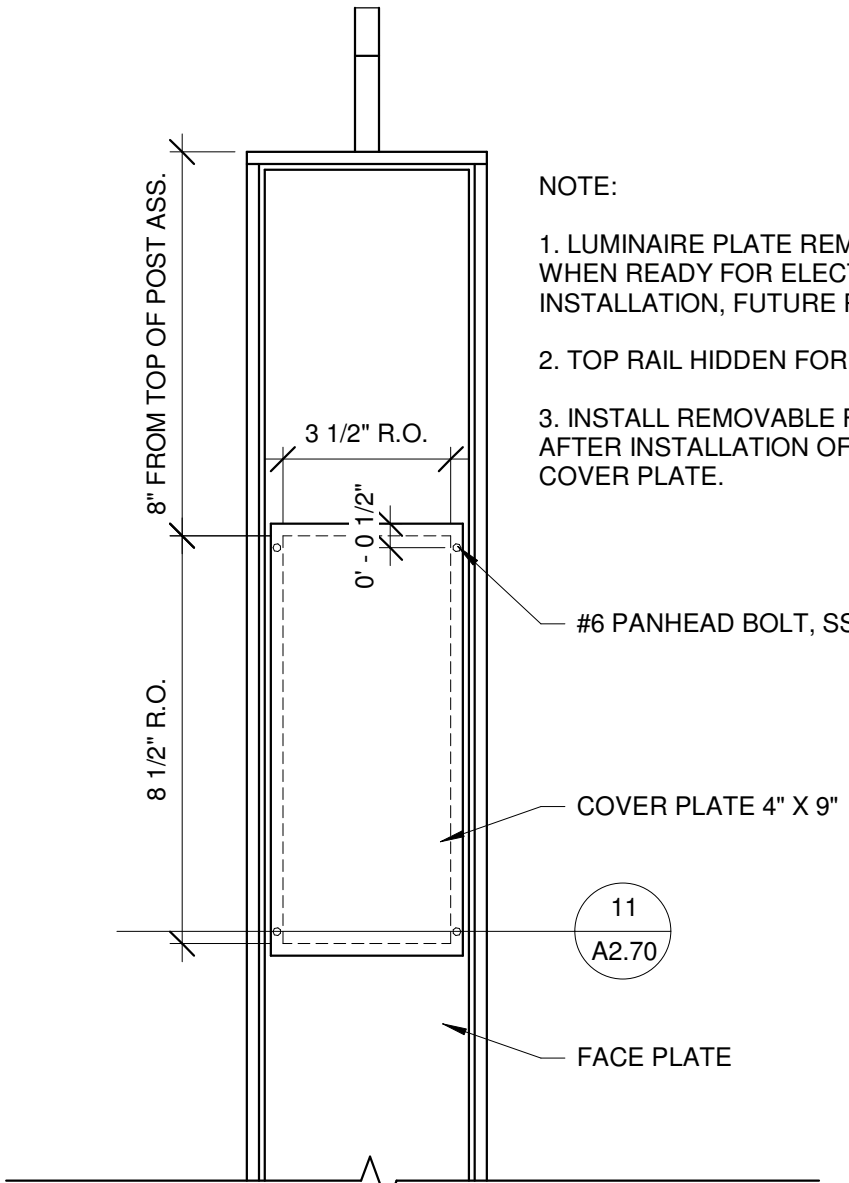
5 BULL RAIL POST SECTION
1 1/2" = 1'-0"



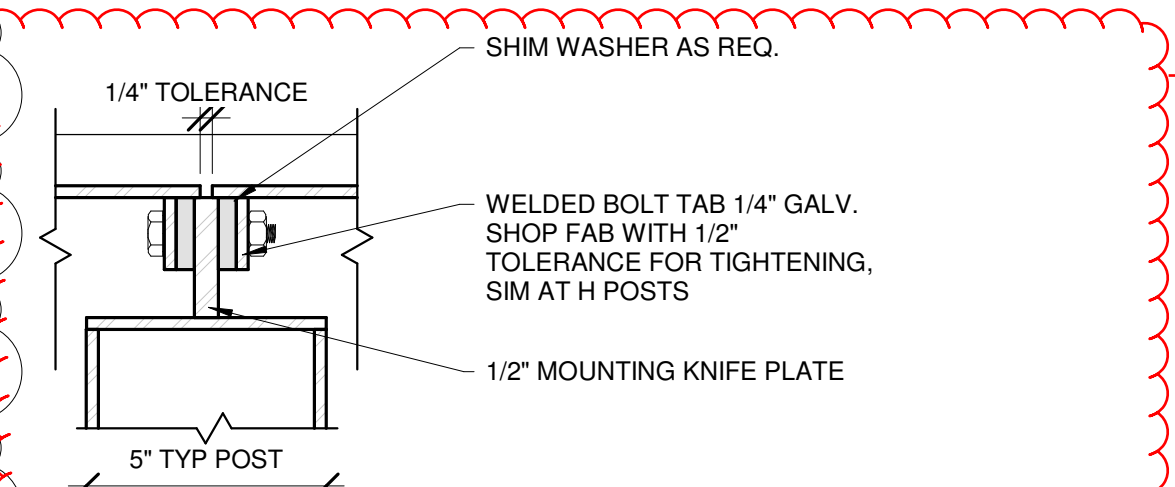
3 TYP INTERMEDIATE POST ELEVATION
1 1/2" = 1'-0"



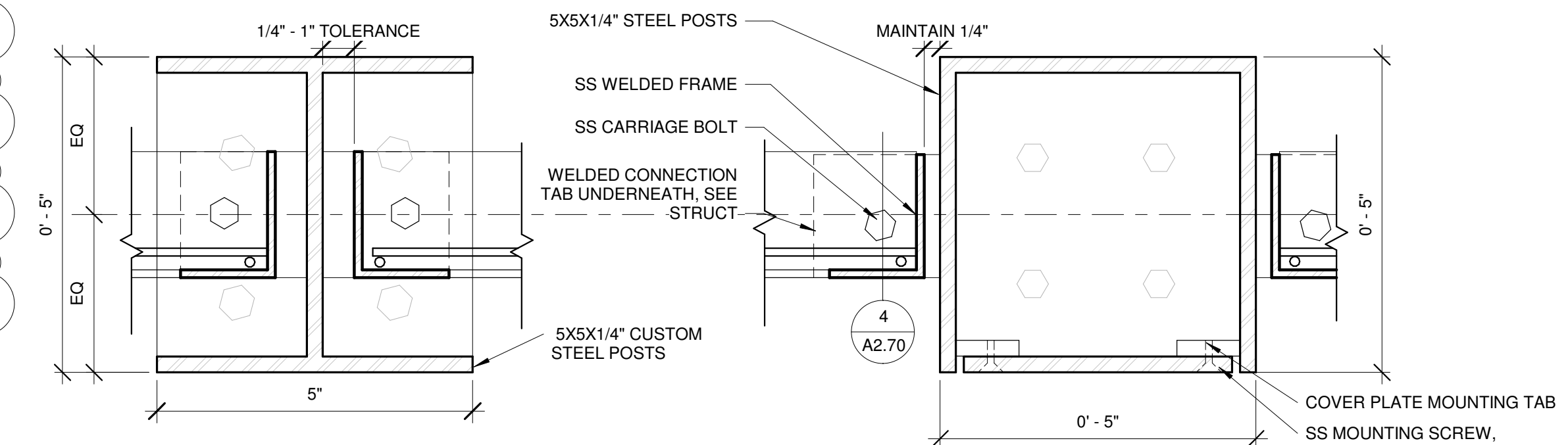
1 TYP POST SECTION
1 1/2" = 1'-0"



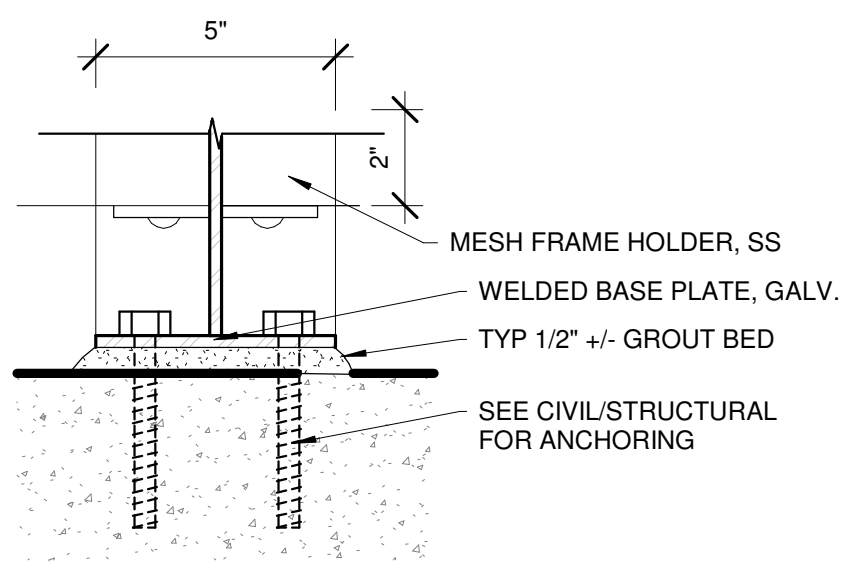
12 COVER PLATE ELEVATION
3" = 1'-0"



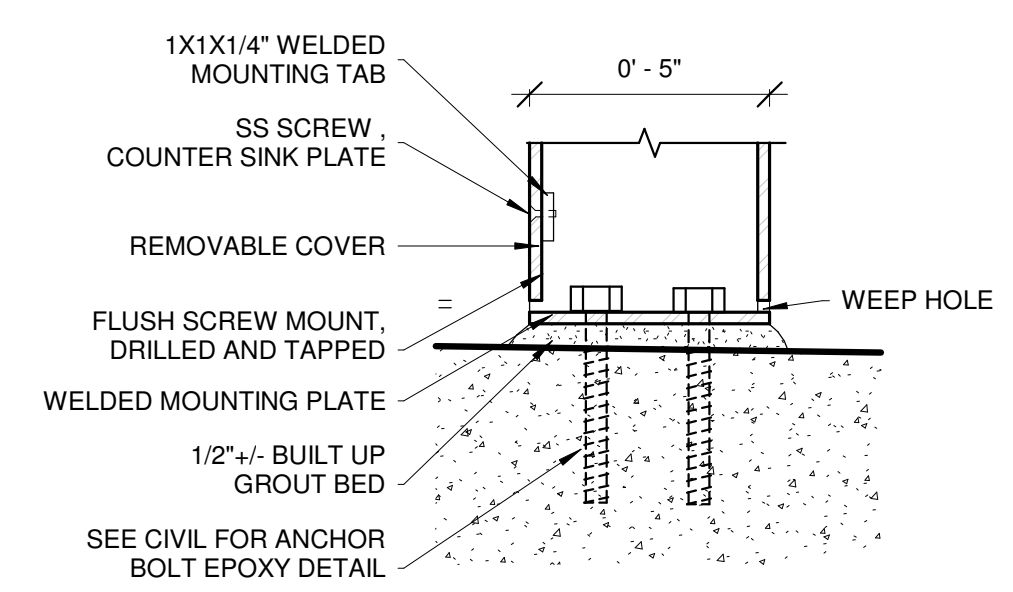
8 TOP RAIL DETAIL CONNECTION
3" = 1'-0"



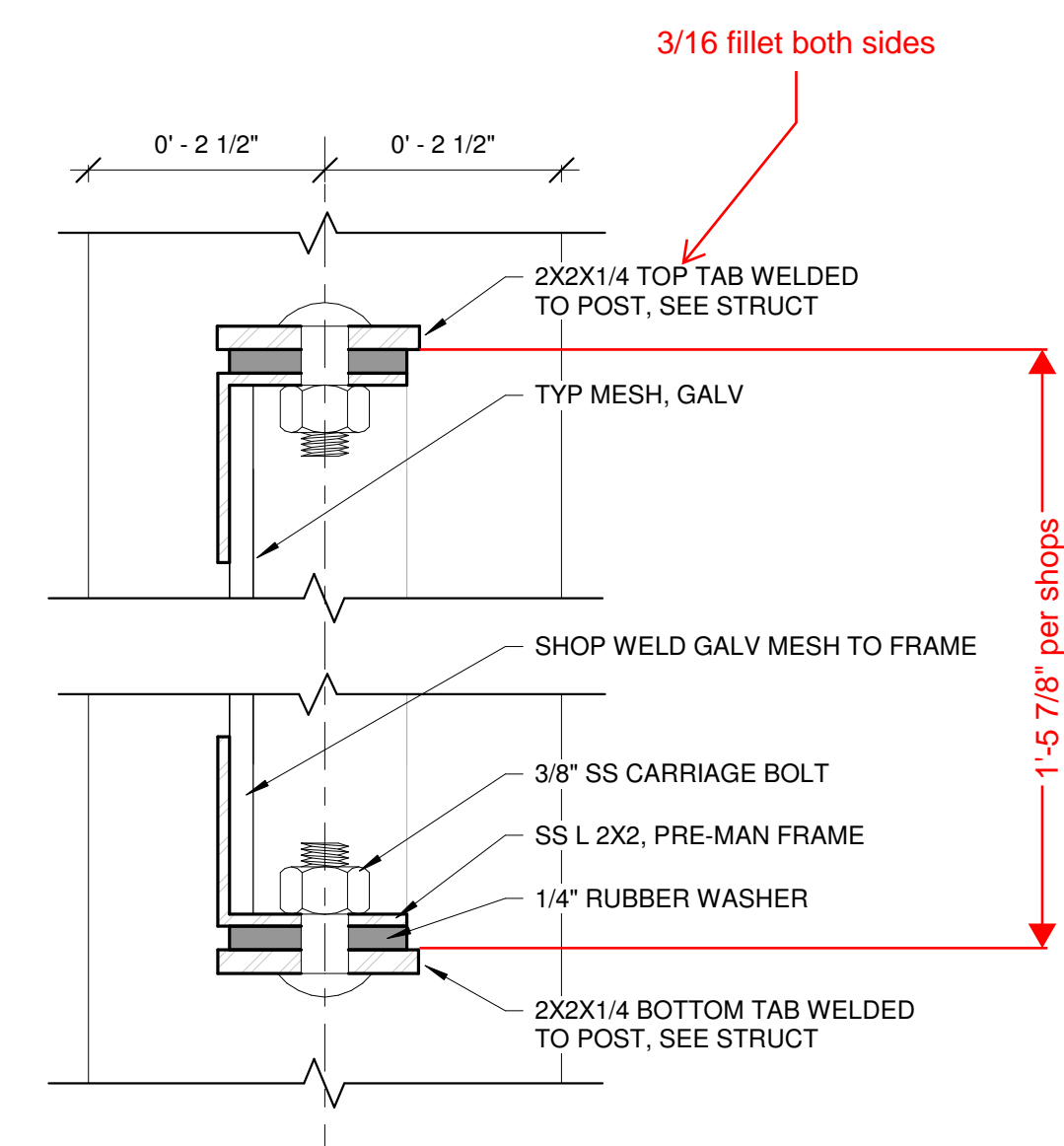
9 POST PLAN CUT
6" = 1'-0"



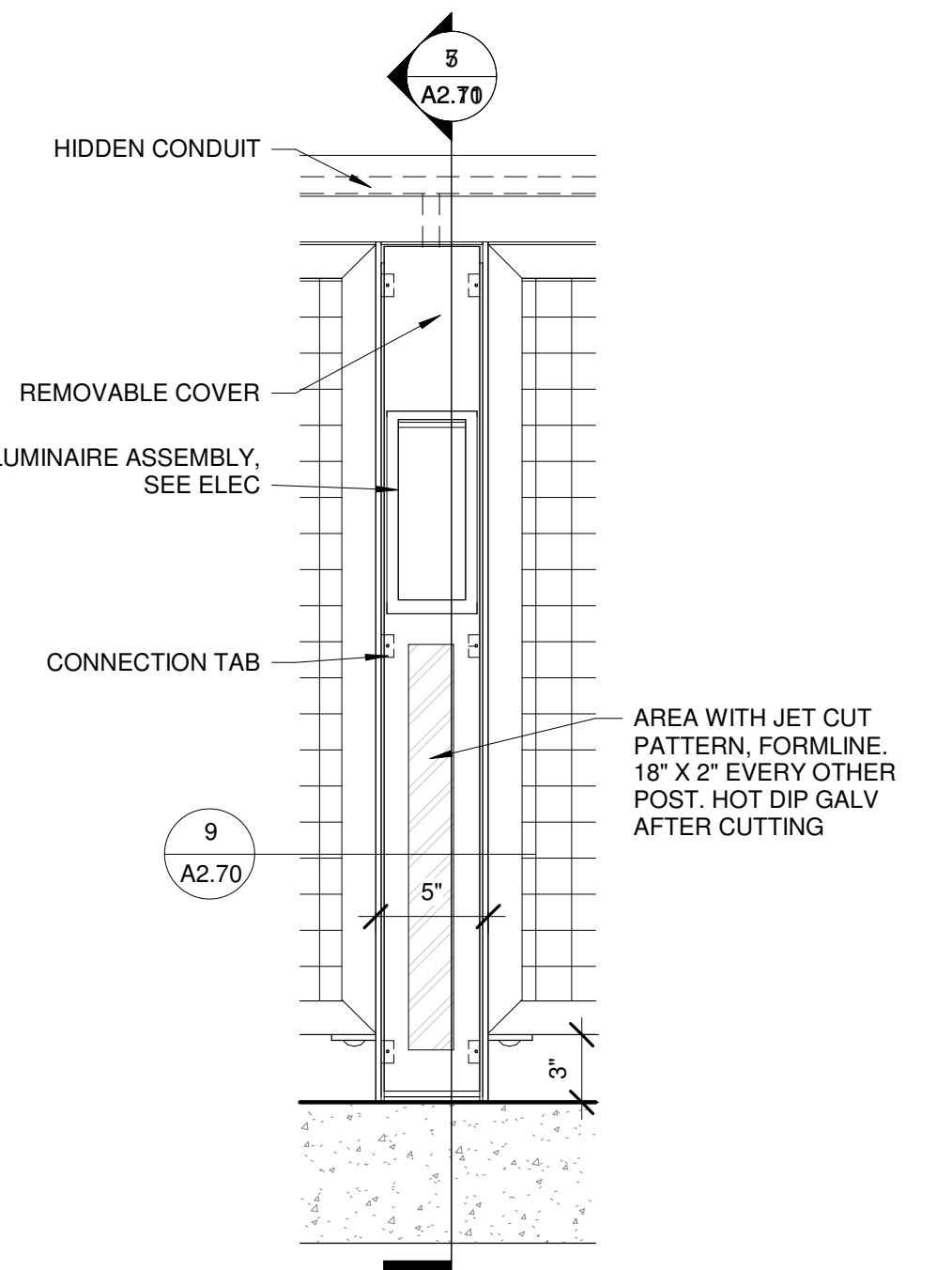
10 INTERMEDIATE BASE
3" = 1'-0"



6 POST BASE
3" = 1'-0"



4 WIRE PANEL FRAME, SECTION
6" = 1'-0"



2 TYP POST ELEVATION
1 1/2" = 1'-0"

- NOTE:
1. POST SEQUENCE, TYP SEAWALK
 2. MATCH INTERMEDIATE POST TO LIGHTED POST HEIGHT.
 3. MESH INFILL TYP. BETWEEN POSTS. SEE DETAIL 3/A2.73 FOR PANEL HEIGHT, SIM ELEVATION.
 4. SEE ELECTRICAL FOR CONDUIT ROUTING.

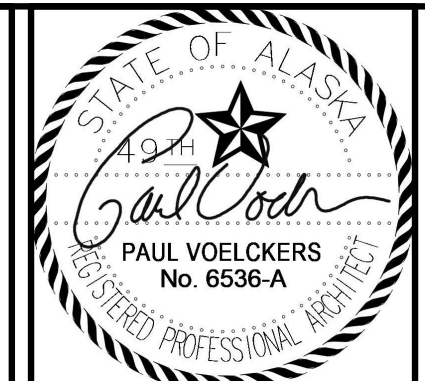
- NOTE:
1. ALL RAILINGS TO BE HOT DIP GALV STEEL U.O.N. ALL WELDED WIRE INFILL PANELS TO BE HOT DIPPED GALVANIZED U.O.N. ALL WELDS TO BE SHOP FABRICATED WHERE POSSIBLE
 2. FOR NON-LIGHTED RAILING SIDE USE TYP INTERMEDIATE POST

Per RFI 109:
3/8-16NC X 2-1/2" Long, GR 5, HDG type bolts for this application approved.

Per RFI 057:
Scougal Rubber 1/8" THK
Neoprene Rubber, 55
Durometer acceptable

AP: JESSE WILL
SUPPLY RUBBER
GASKETS HERE

6/16/2023 9:54:59 AM
\\Mr2023\data\Projects\2022\2228_Skagway Ore Dock\REVIT\Railing Drawings_Cent_20_JUL_2023.rvt



NO.	DATE	BY	REVISION
1	8/16/2023		2 (RFI #15)

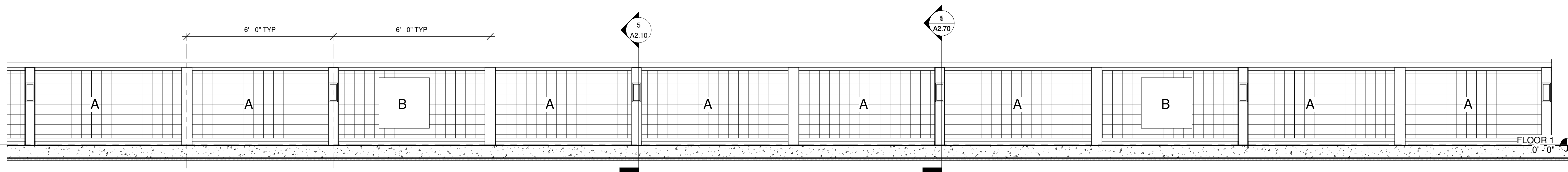


ORE PENINSULA REDEVELOPMENT
SKAGWAY, ALASKA

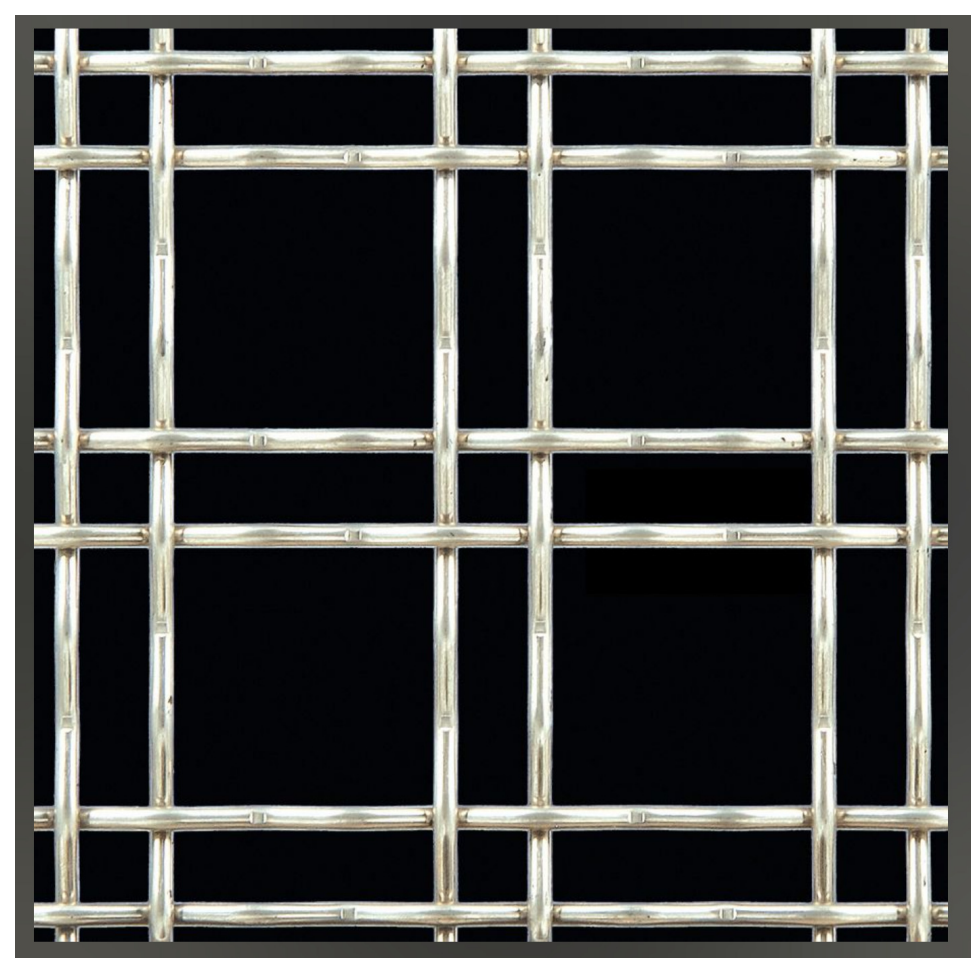
SEAWALK TYP RAILING
POST DETAILS

DRAWN: MRV	PROJECT NO.:
DESIGN: PV	SCALE: AS SHOWN
CHECKED: PV	DATE: 7/21/2023
DRAWING NO.	A2.70
SHEET NO.	55 OF 381

NOT FOR CONSTRUCTION



12 RAILING RHYTHM ELEVATION
1/2" = 1'-0"



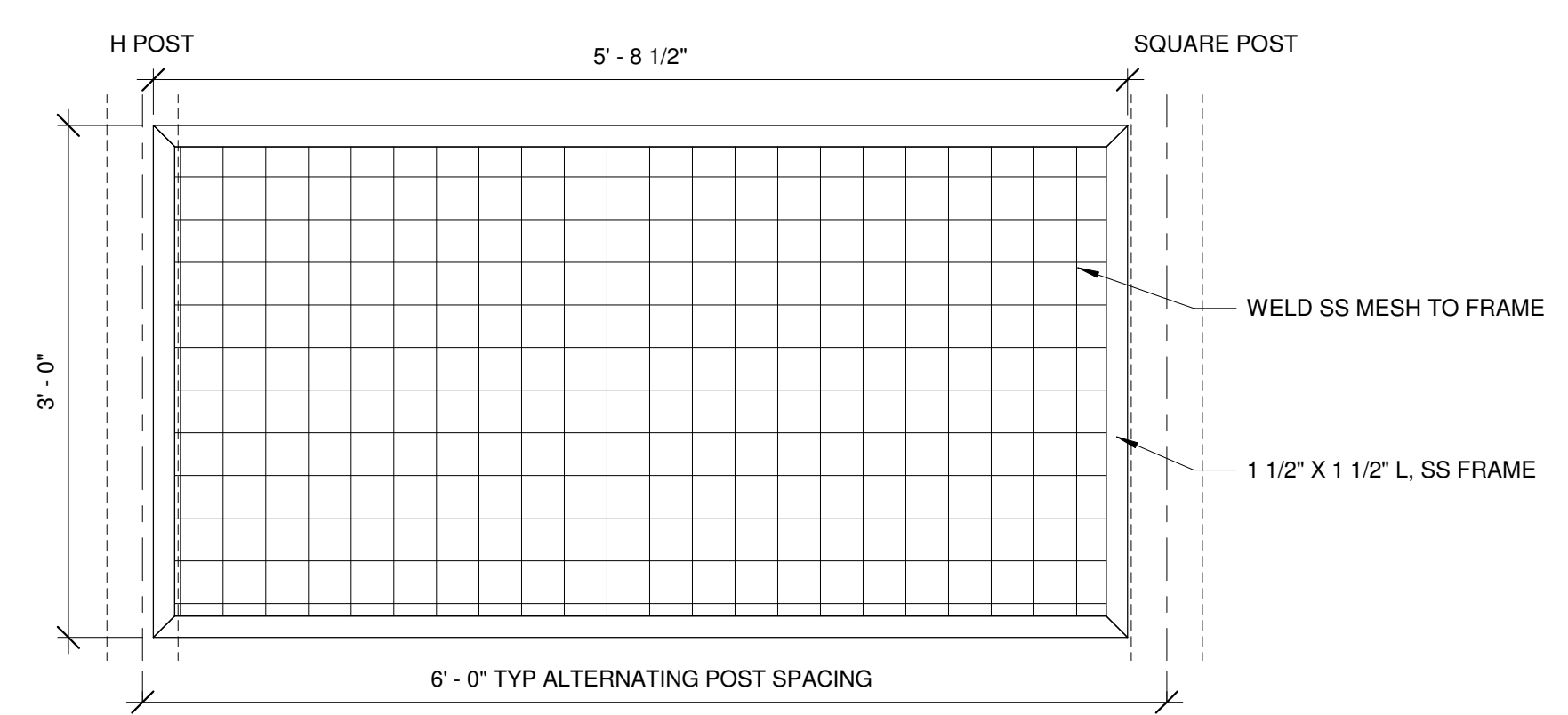
GALVZNIED
3"x3"x0.192" CARBON
STEEL WELDED WIRE

PANEL TYPE A
McNICHOLS® Wire Mesh
Square, Galvanized Steel, 3" X 3"

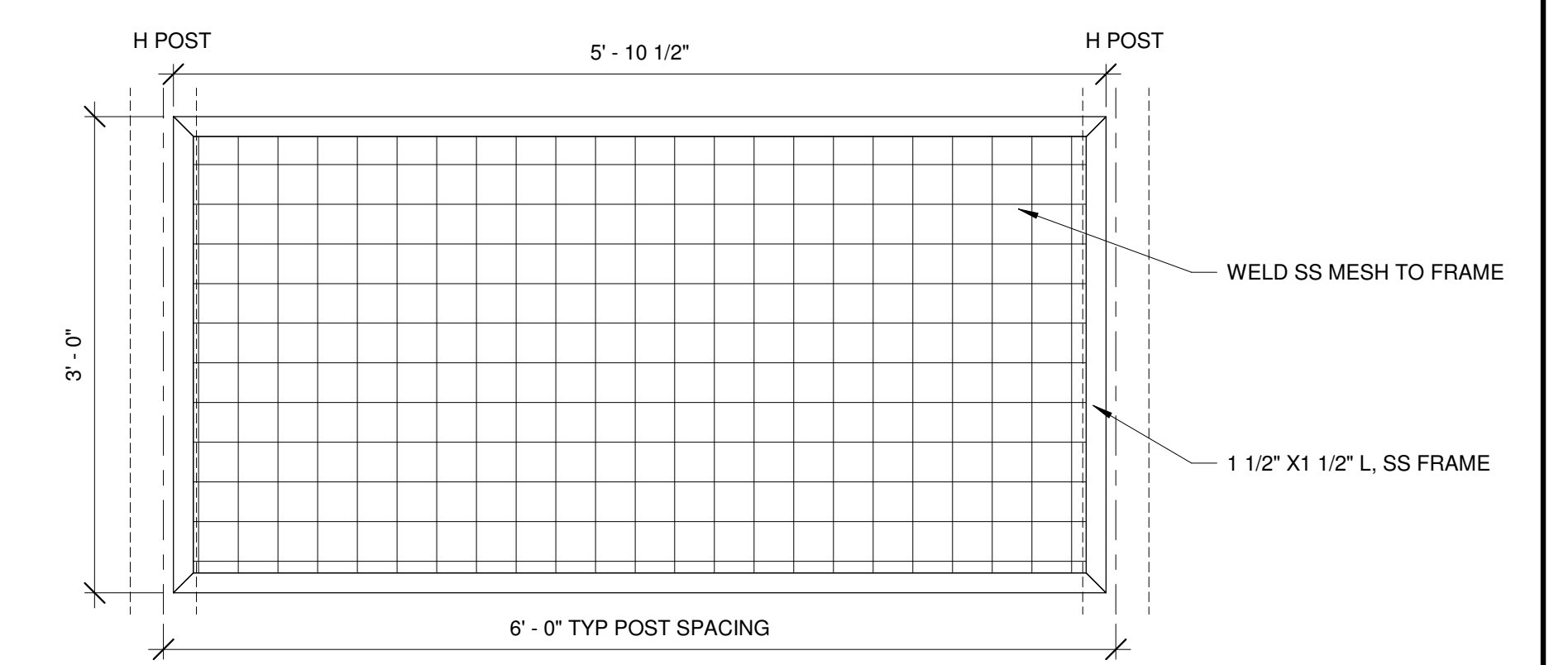
**AP: PURCHASE BARE WIRE
MESH AND GALV. AFTER FAB.**

NOTE:

1. BOLT FRAME TO POSTS. SEPARATE FRAME FROM POST USING RUBBER WASHERS.



2 MESH PANEL, LIGHTED SIDE TYP DIMENSION
1" = 1'-0"



3 MESH PANEL, NON LIGHTED SIDE TYP DIMENSION
1" = 1'-0"

GENERAL NOTES

TYPICAL RAILING TO BE A CONTINUOUS CUSTOM RAILING AS DETAILED. POSTS TO BE STANDARD 6' O.C. EXCEPT NEAR CORNERS OR TRANSITIONS WHERE A SMALLER SECTION CAN BE MADE, SEE DETAILS. POSTS ALTERNATE BETWEEN SQUARE AND "H" POSTS. ON SEAWARD SIDE POSTS ARE TO RECIEVE LIGHTING PER ELECTRICAL.

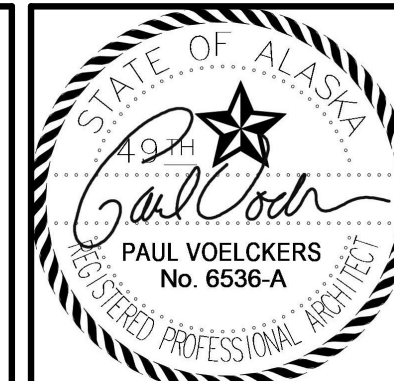
BOLT ON SIGN CONTENT EXAMPLES ARE SHOWN. FINAL DESIGN TO BE COORDINATED WITH OWNER AND LOCATED ACCORDING TO PROXIMITY TO INDIVIDUAL DOCKS.

5/3/2023 3:13:54 PM C:\Users\colite\OneDrive\Documents\Railing Drawings_Cent_2_May_2023_colite\AVGK.rvt

kpff **MRV**
ARCHITECTS
ARCHITECTURE · PLANNING · INTERIORS

1601 5th Avenue, Suite 1300
Seattle, Washington 98101
(206) 382-0600 Fax (206) 382-0500

420 Glacier Ave STE 101
Juneau, AK 99801
(907) 586-1371



NO.	DATE	BY	REVISION

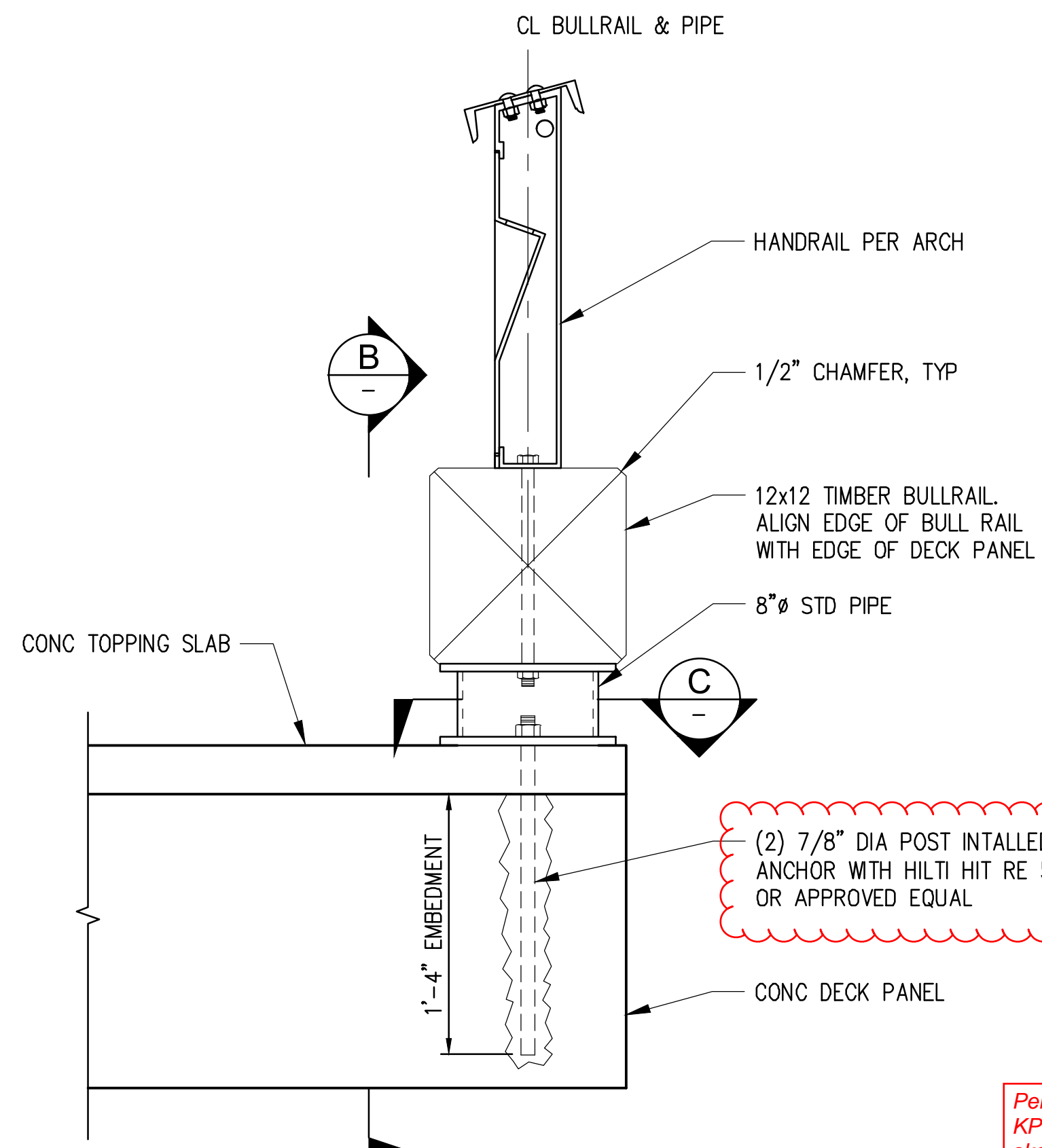


ORE PENINSULA REDEVELOPMENT
SKAGWAY, ALASKA

SEAWALK RAIL PANEL
DETAILS

DRAWN: MRV	PROJECT NO.:
DESIGN: PV	SCALE: AS SHOWN
CHECKED: PV	DATE: 5.3.2022
DRAWING NO.	A2.71
SHEET NO.	OF

NOT FOR CONSTRUCTION

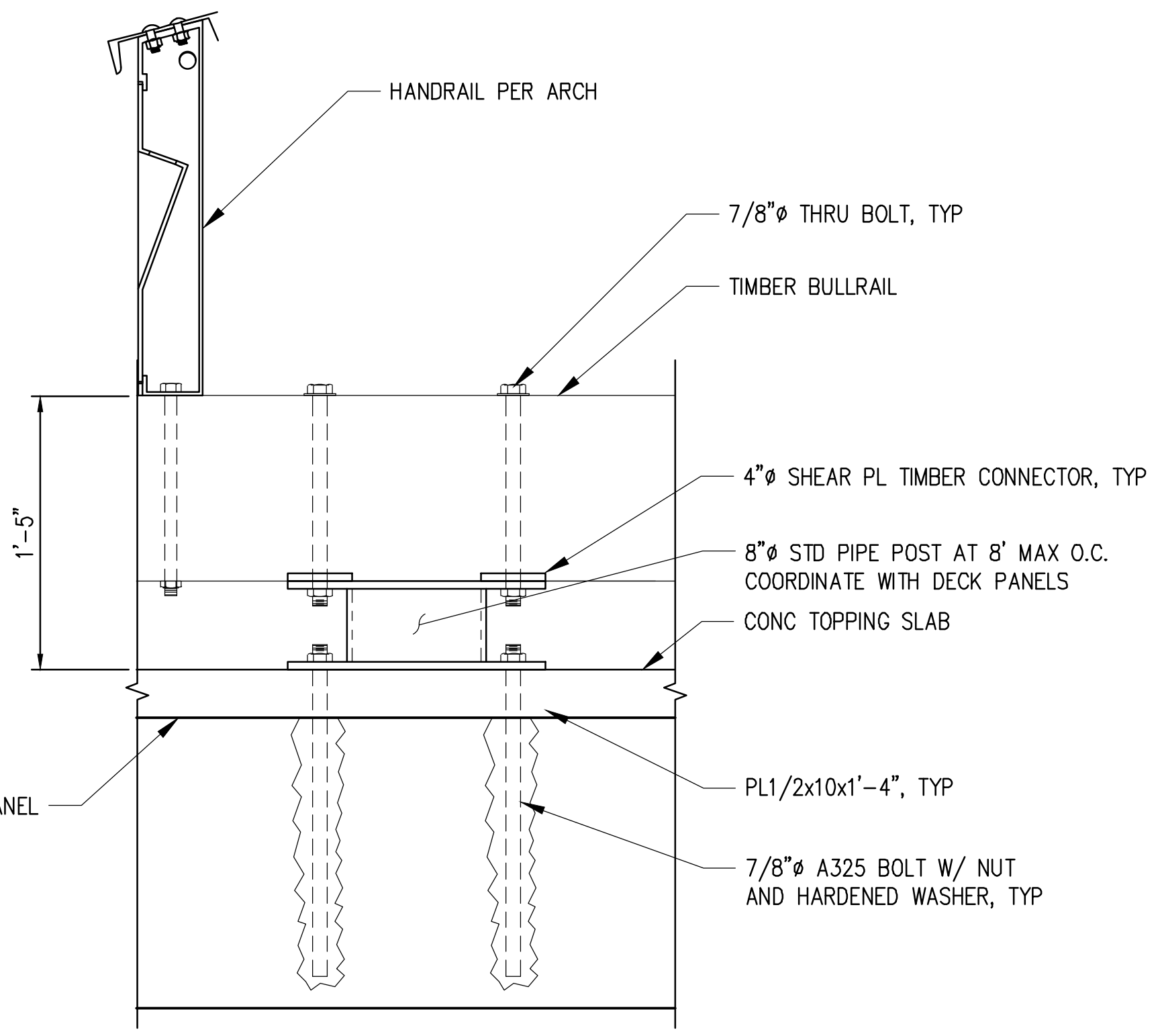


A SECTION
S3.00 SCALE: 1 1/2"=1'-0"

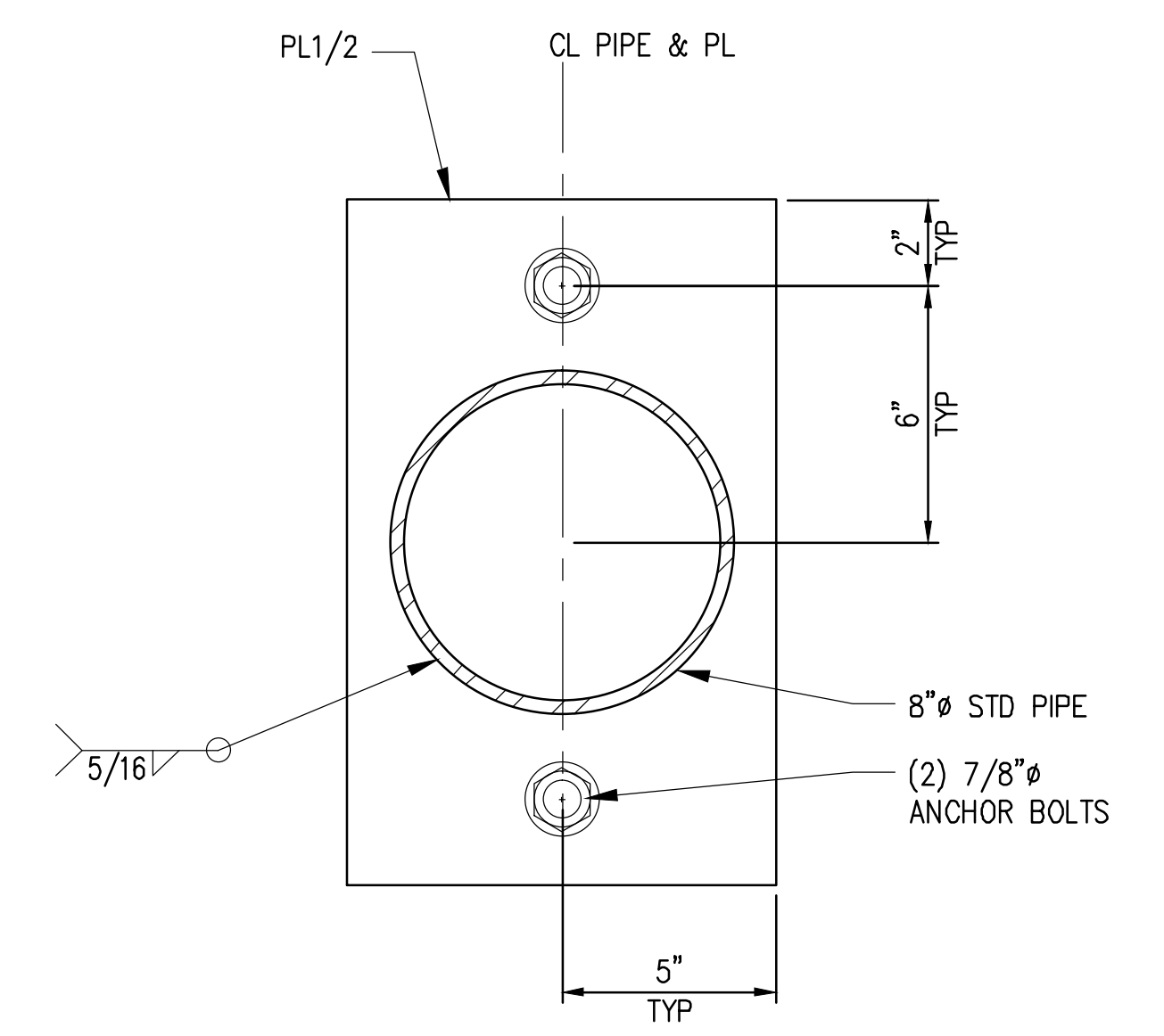
(2) 7/8" DIA POST INSTALLED ANCHOR WITH HILTI HIT RE 500 V3 OR APPROVED EQUAL

Per RFI 005: KPFF provided sketch helps to clarify - CTC will now install these embeds during casting

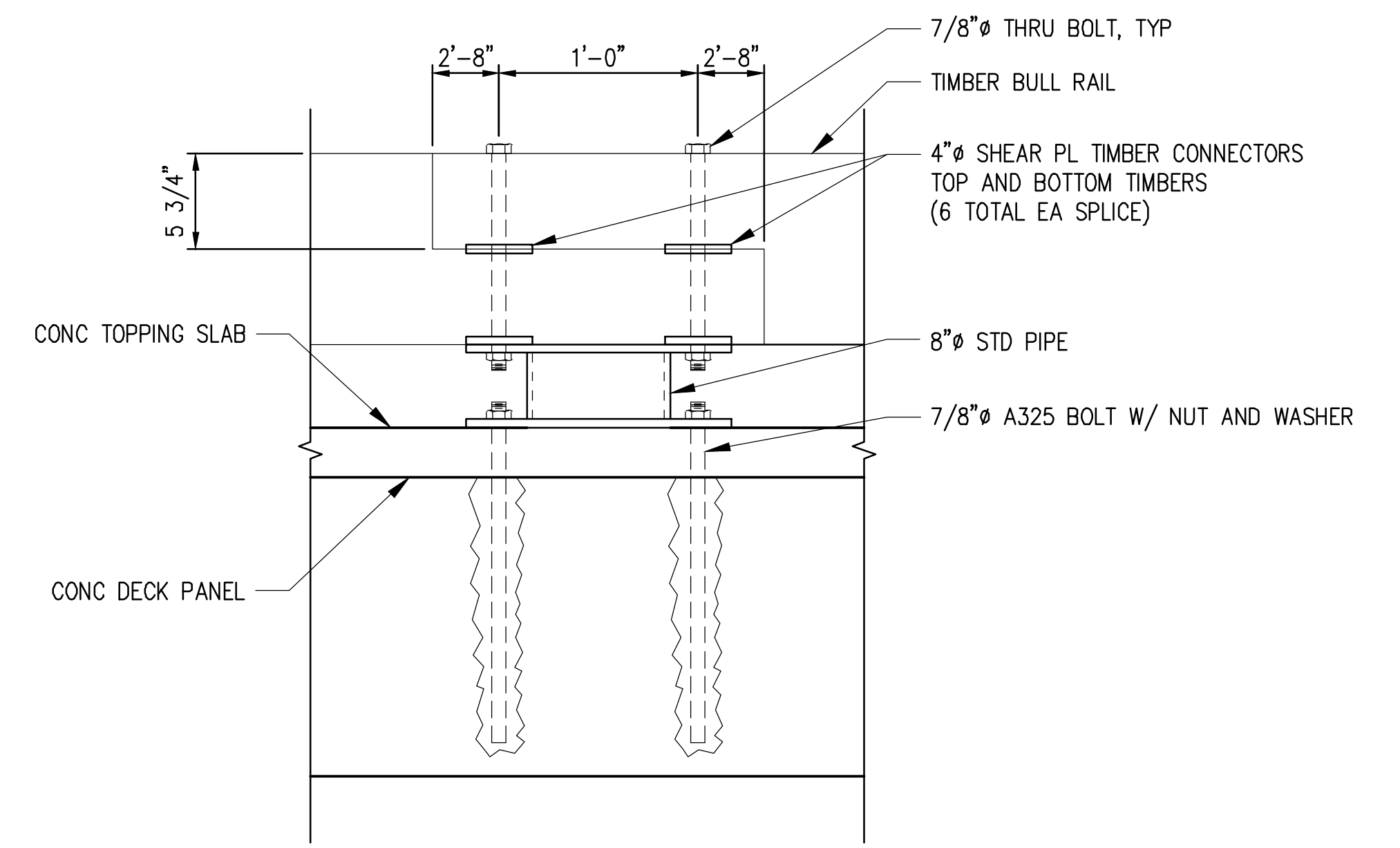
AP: FASTENERS INTO OR THRU WOOD, CONCRETE SUPPLIED BY OTHERS



B SECTION
SCALE: 1 1/2"=1'-0"



C SECTION
SCALE: 3"=1'-0"

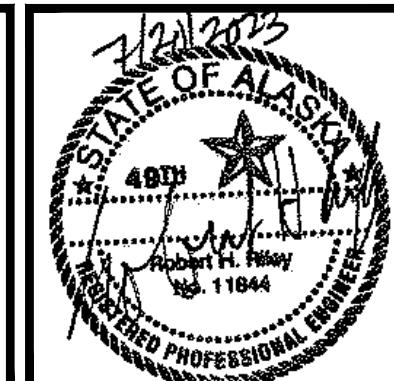


E TYPICAL BULLRAIL SPLICE
S3.00 SCALE: 1 1/2"=1'-0"

Plotted: Jul 20, 2023 - 7:51pm dya Layout: S3.28 Cruise Dock Trestle Bullrail Sections and Details M:\2021\2100135 Skagway Ore Peninsula Multi-use Dock\Drawings\Current\2100135_S3.28 Cruise Dock Trestle Bullrail Sections and Details.dwg



1601 5th Avenue, Suite 1300
Seattle, Washington 98101
(206) 382-0600 Fax (206) 382-0500



NO.	DATE	BY	REVISION

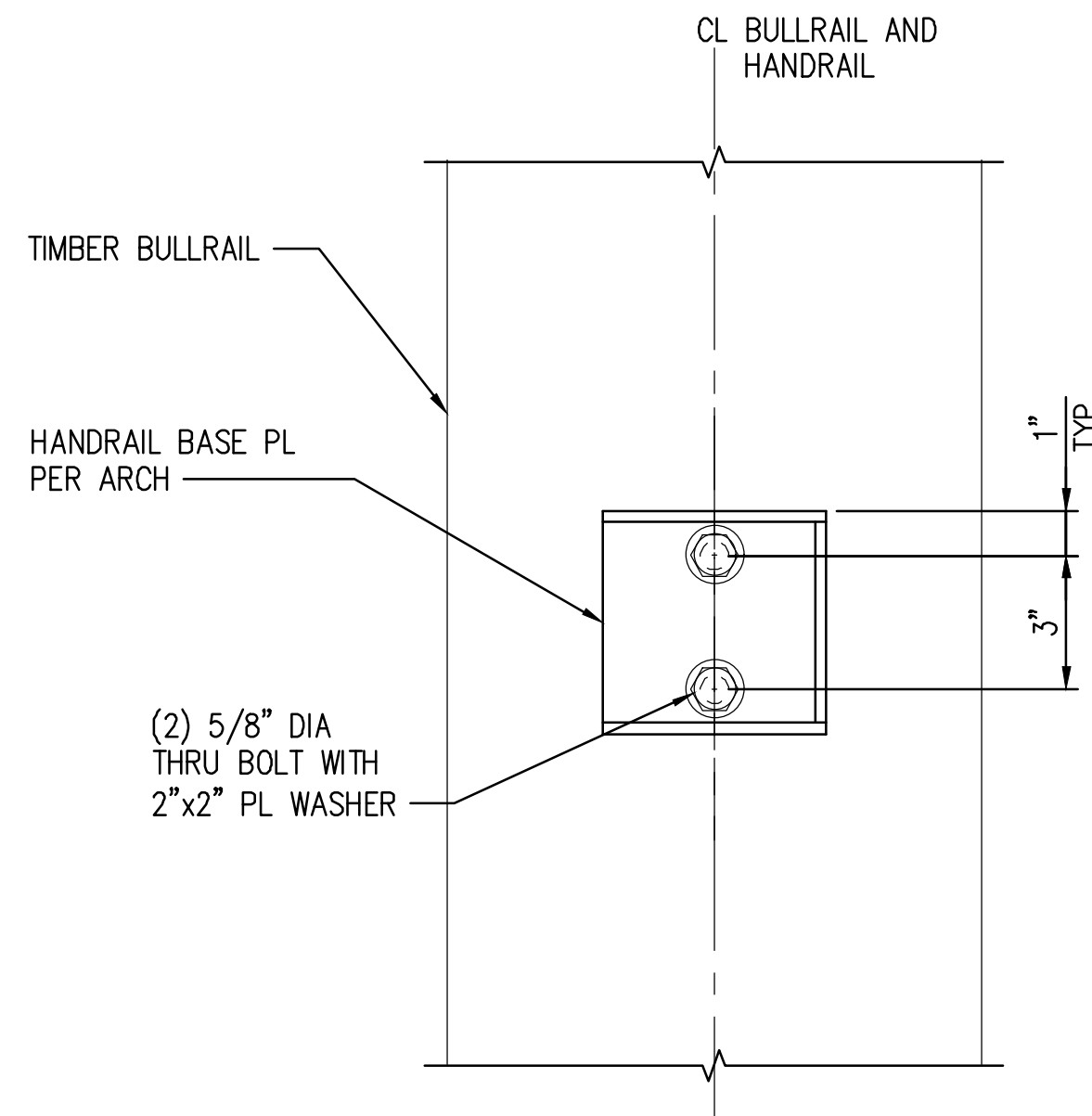


**ORE PENINSULA REDEVELOPMENT
SKAGWAY, ALASKA**

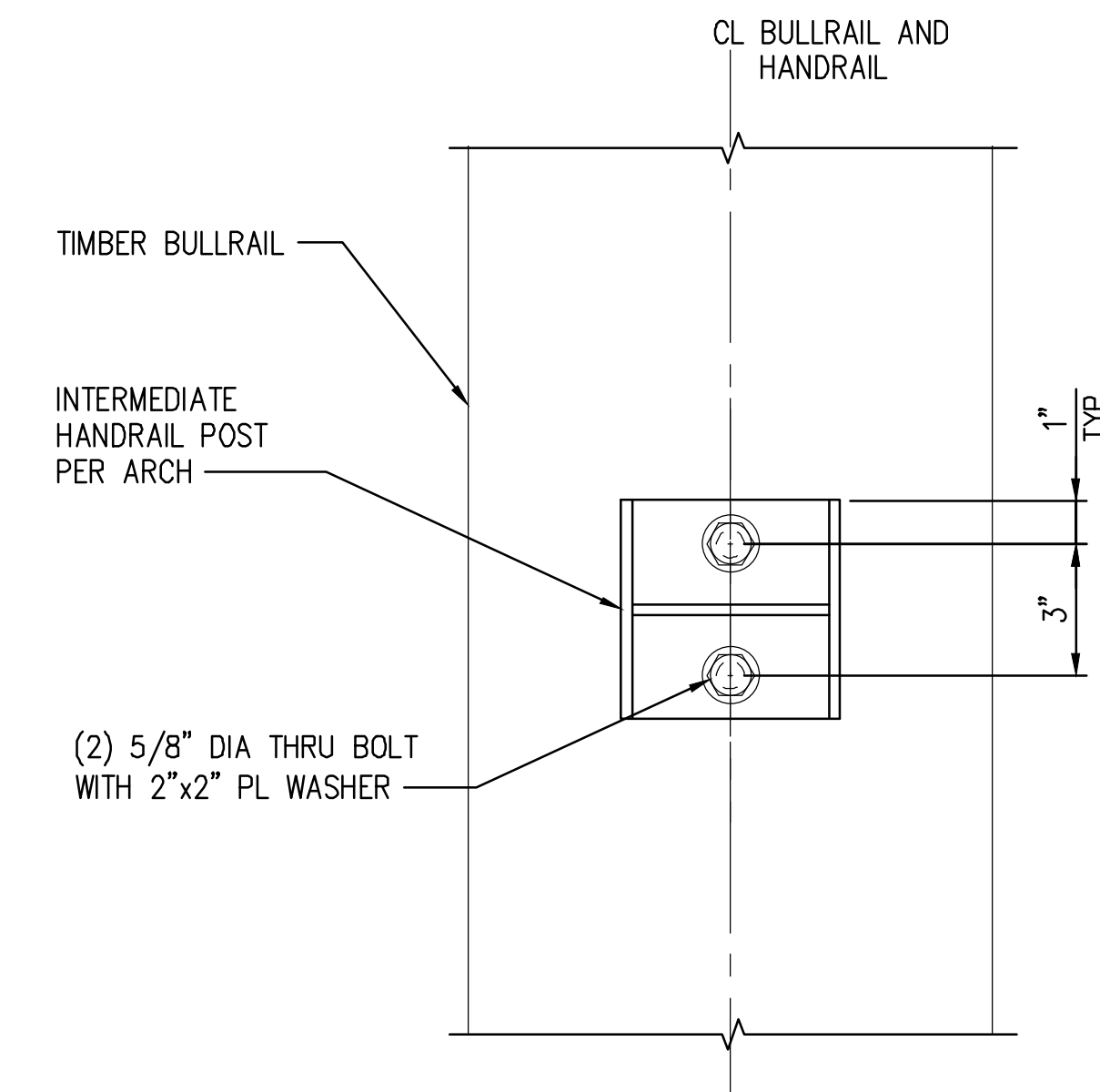
**CRUISE DOCK TRESTLE
BULLRAIL SECTIONS AND DETAILS**

DRAWN: JH	PROJECT NO.: 2100135
DESIGN: KP	SCALE: AS SHOWN
CHECKED: RR	DATE: 07/21/2023
DRAWING NO.	S3.28
SHEET NO.	188 OF 381

NOT FOR CONSTRUCTION



A **NON-REMOVABLE HANDRAIL CONNECTION**
 S3.00 SCALE: 3" = 1'-0"

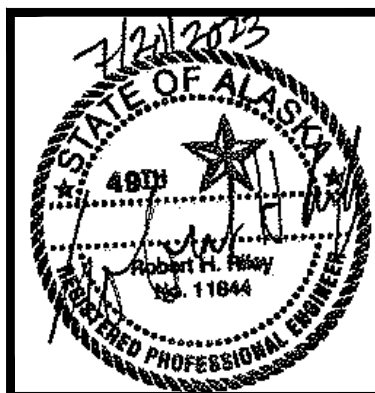


F **NON-REMOVABLE HANDRAIL CONNECTION**
 S3.00 SCALE: 3" = 1'-0"

Plotted: Jul 20, 2023 - 7:51pm dvy Layout: S3.29-Cruise Dock Trestle Handrail Sections and Details
 M:\2021\2100135 Skagway Ore Peninsula Multi-use Dock\Drawings\Current\2100135_S3.29 Cruise Dock Trestle Handrail Sections and Details.dwg

kpff

1601 5th Avenue, Suite 1300
 Seattle, Washington 98101
 (206) 382-0600 Fax (206) 382-0500



NO.	DATE	BY	REVISION



**ORE PENINSULA REDEVELOPMENT
 SKAGWAY, ALASKA**

**CRUISE DOCK TRESTLE
 HANDRAIL SECTIONS AND DETAILS**

DRAWN: JH	PROJECT NO.: 2100135
DESIGN: ED	SCALE: AS SHOWN
CHECKED: RR	DATE: 07/21/2023
DRAWING NO.	S3.29
SHEET NO.	189 OF 381

NOT FOR CONSTRUCTION