

ADDITIONAL MATERIAL FOR NPS SIGN PERMIT FOR THE MASCOT SALOON

DESCRIPTION OF SIGN(S): (Identifying text)

Three signs are proposed to be installed on the Mascot Saloon:

On the front façade, facing Broadway:

- One 19.5" x 96" projecting sign reading "The Mascot." (with an NPS Arrowhead in a circle below the main sign to mimic the historic layout) to match historic photographs like those found in Figure 1 and Figure 2.
 - Background color of the front projecting sign is proposed to be #44 Greyish Brown, Text is #45 Gold-Tan, with the frame of the entire sign is #23 Dark Grayish Reddish Brown which matches the trim of the building.
 - **13 Square Feet**
 - **Projecting sign extends over the entire boardwalk as a reproduction of an historic sign as noted in 19.08.010 Purpose, C Exemptions, 11. Actual signs, or exact reproductions of signs used in Skagway during the historical period 1897 through 1929.**

Side elevation, facing 3rd:

- The current projecting pointing hand restroom sign is proposed to be updated to a new projecting sign of a pointing hand measuring 7.6" x 36" which more closely aligns with historic photographs (Figure 1) and to be installed over the entrance to the east.
 - Sleeve is #44 Greyish Brown, Hand is #45 Gold-Tan; in addition to the NPS Arrowhead.
 - **1.75 Square Feet**
- A 42" x 42" mounted Wayside exhibit to the west of the single human access door explaining the history of the side entrance to the saloon.
 - Background color is #45 Gold-Tan, trim is #44 Greyish Brown.
 - **12.25 Square Feet**

SUMMARY OF EXISTING SIGNS

On the front façade, facing Broadway:

- "The Mascot" – a sign directly painted on the façade, takes up the 62 square feet between the two windows on the second floor of the gable front of the Mascot Saloon.
 - Black background with tan letters at matching historic photographs.
 - **62 Square Feet**

Side elevation, facing 3rd:

- Projecting - Small projecting sign featuring an arm
 - Black background and white text
 - **~ 1.75 square feet.**
 - *Upon approval this sign will be removed and replaced above the next door to the east with the proposed sign above.*

Current Square Foot of Signage = 63.75 Square Feet
Proposed Additional Square Foot of Signage = 25.75 Square Feet
New total = 89.5 Square feet, below the allotted 160 Square Feet.

HISTORIC PHOTOGRAPHS – from Karl Gurke’s Photo Essay on the Mascot Saloon Group dated August 2021.



Figure 24b: Detail, Mascot Saloon front entrance, looking southeast.
Date: 28 October 1901.

Figure 1: From Karl Gurke's Photo Essay on the Mascot Saloon Group. Note the large projecting sign feature Rainier Beer and the "Mascot Family Entrance" Sign. Originally the entrance to the building was on the corner and was moved to the mid of the gable during the period of significance where it remains today. Photo dates to 1901.



Figure 34b: Detail, Mascot Saloon and Pacific Clipper Line Office buildings, looking northeast.
Date: Summer 1913.

Figure 2: From Karl Gurke's Photo Essay on the Mascot Saloon Group. Note the large projecting sign which now reads "The Mascot" along with the small circular sign which the NPS is proposing at the inspiration for the inclusion of the NPS Arrowhead in the sign permit. Photo dates to 1913.

Please contact Angela Wetz, Superintendent of Klondike Gold Rush National Historical Park at 907-973-0156 or Heather Feil, NPS Architectural Historian at heather_feil@nps.gov

NPS

Graphic Layouts

National Park Service
U.S. Department of the Interior



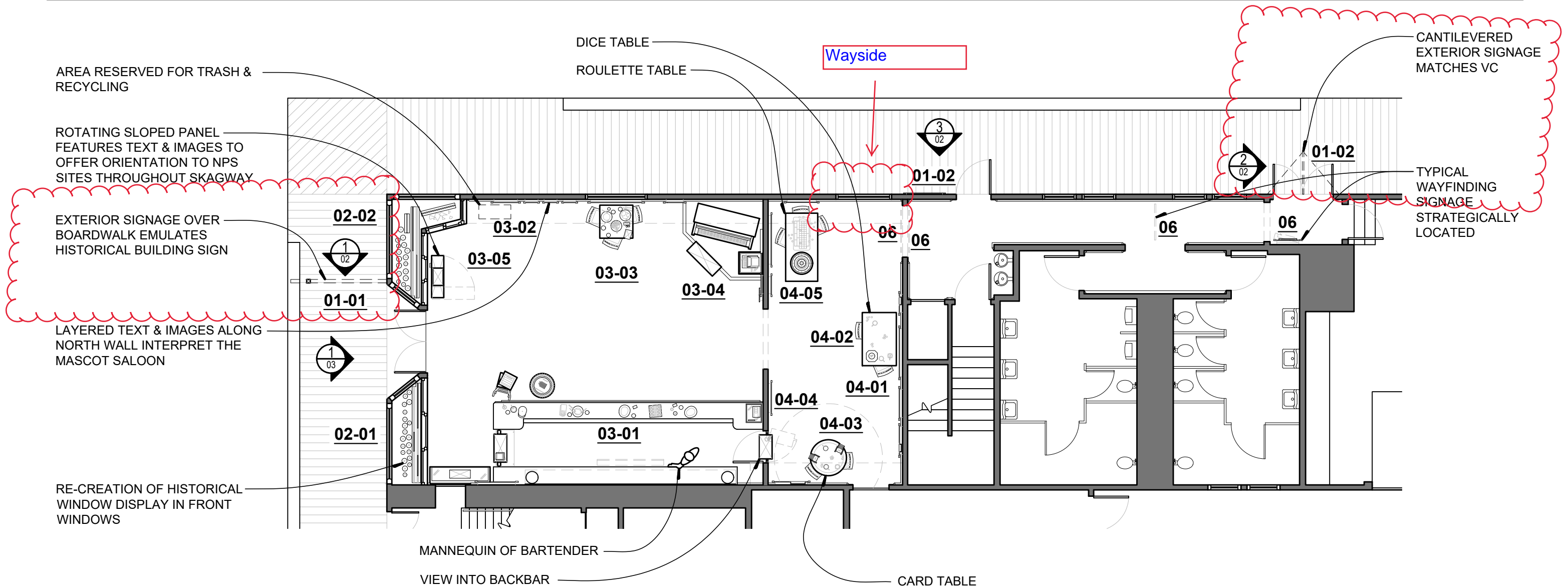
Klondike Gold Rush
National Historical Park
Mascot Saloon

Front Loaded External Signage
December 6, 2022



FORMATIONS
EXHIBITS + GRAPHICS + TECHNOLOGY

EXHIBIT PLAN: SCENES 01 THROUGH 06



LEGEND

01: EXTERIOR SIGNS

02: WINDOWS

02-01: WINDOW ON THE RIGHT

02-01: WINDOW ON THE LEFT

03: BARROOM

03-01: BAR AREA

03-02: LONG WALL FACING THE BAR:
INTERPRETIVE PANELS

03-03: TABLE WITH CHAIRS AND DISCOVERY
MOMENTS

03-04: THE PLAYER PIANO AND PHONOGRAPH
(MUSIC AT THE MASCOT)

03-05: WINDOWS, INTERIOR

04: BACKROOM

04-01: INTRODUCTION AND RELATED INTERPRETATION

04-02: ROLL THE DICE: CHANCE VS. PROBABILITY

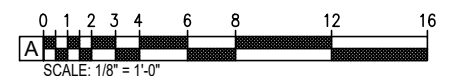
04-03: PLAY POKER: WHO HAS THE WINNING HAND

04-04: VIEW TO THE BACKBAR

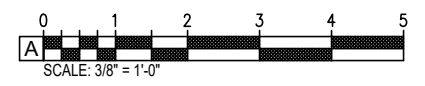
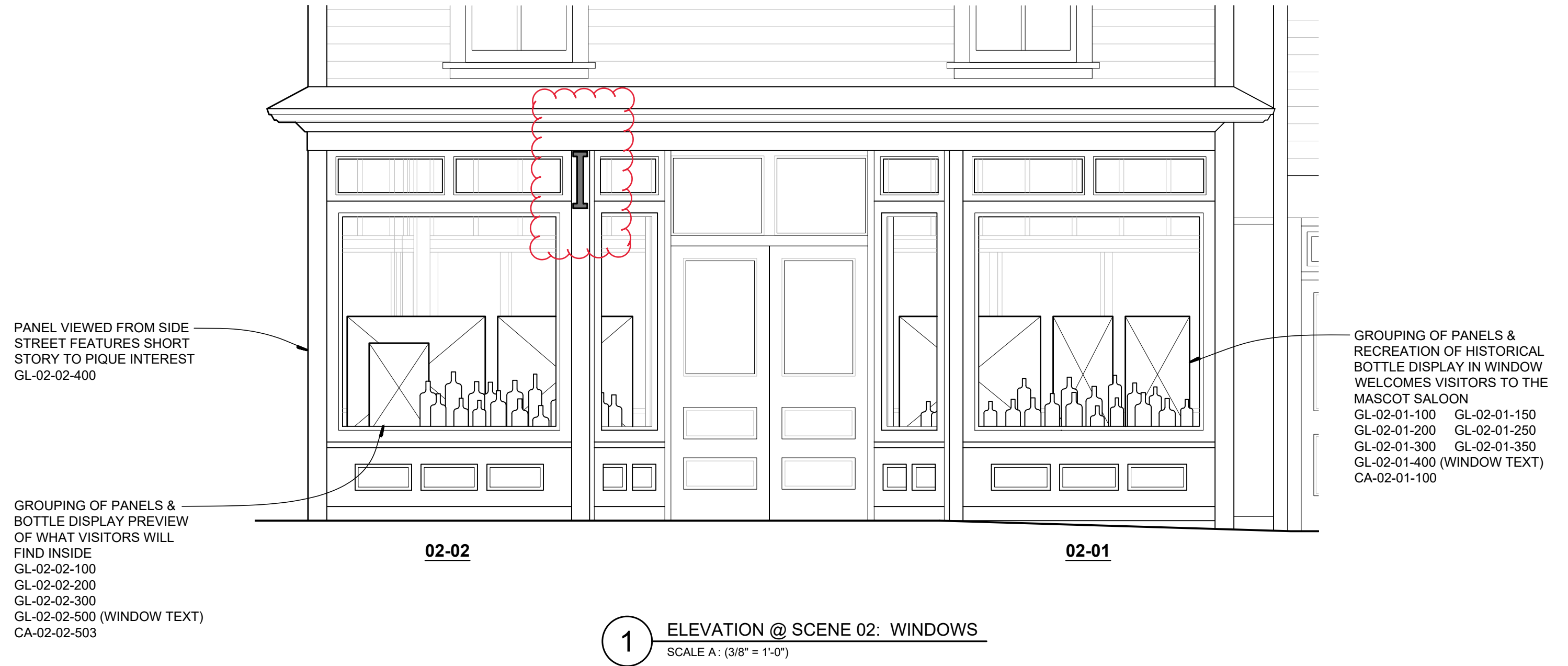
04-05: ROULETTE: IS THE RISK WORTH IT?

06: WAYFINDING

1 EXHIBIT PLAN @ MASCOT SALOON
SCALE A: (1/8" = 1'-0")

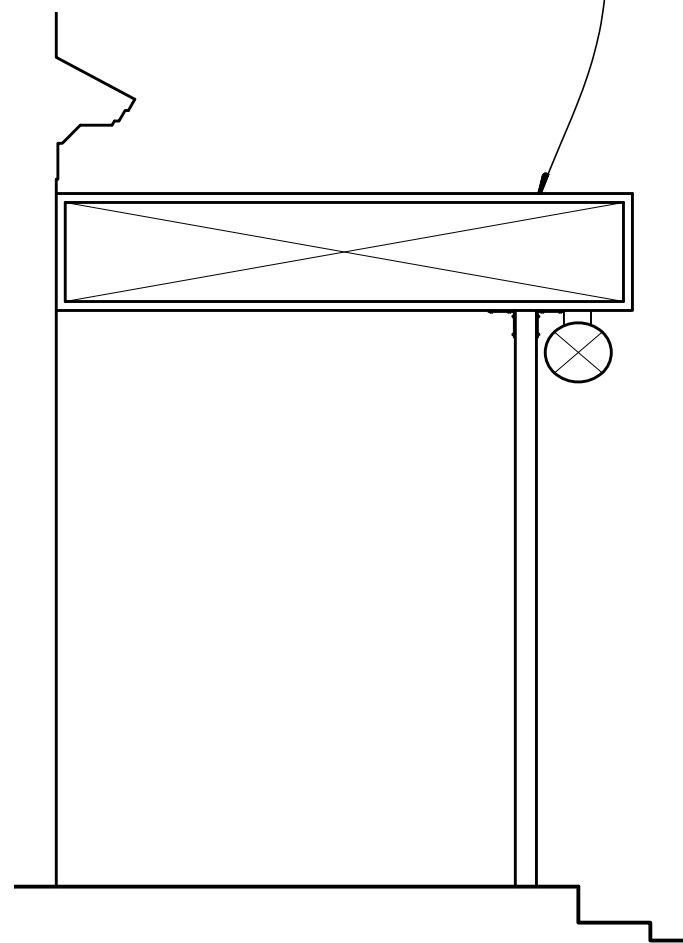


ELEVATION @ SCENE 02: WINDOWS



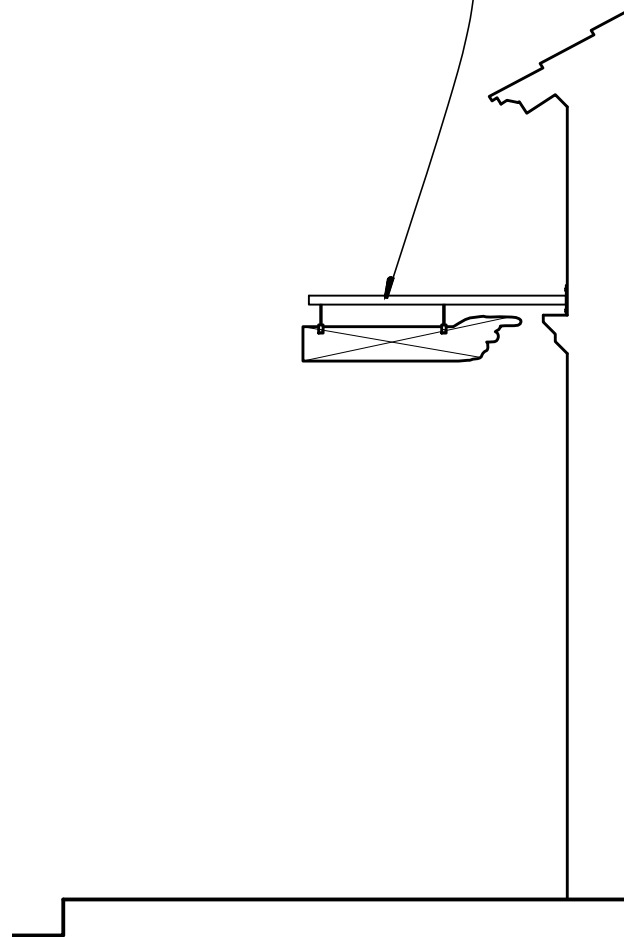
ELEVATIONS @ SCENE 01: EXTERIOR SIGNS

EXTERIOR SIGN OVER BOARDWALK
EMULATES HISTORICAL BUILDING
SIGN CIRCA 1914-1916
GL-01-01-100 GL-01-01-110
GL-01-01-200 GL-01-01-210



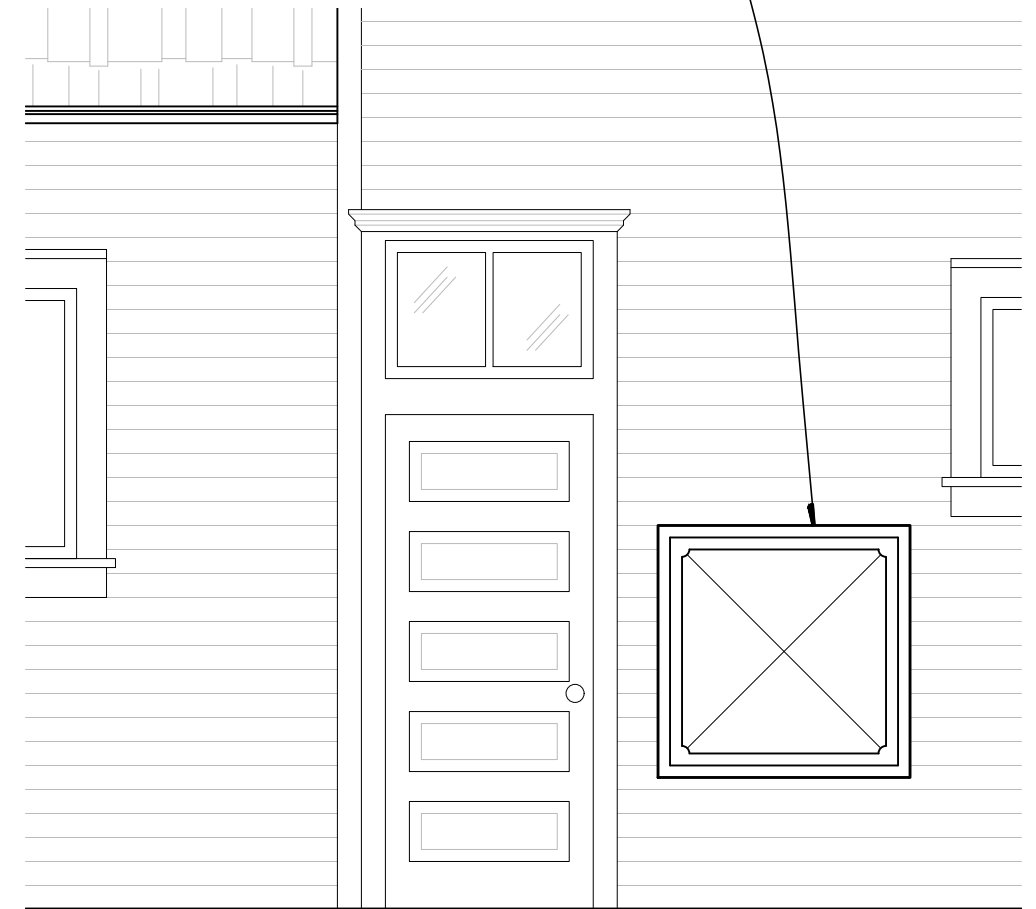
1 ELEVATION @ SCENE
01-01: EXTERIOR SIGN - FRONT
SCALE A: (3/8" = 1'-0")

EXTERIOR SIGNAGE
GL-01-02-150
GL-01-02-160

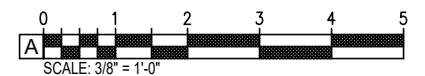


2 ELEVATION @ SCENE
01-02: EXTERIOR SIGN - SIDE
SCALE A: (3/8" = 1'-0")

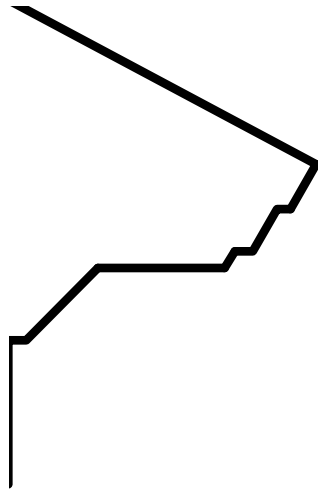
OUTDOOR GRADE GRAPHIC PANEL
IDENTIFIES & INTERPRETS THE
SIGNIFICANCE OF THE HISTORIC
FAMILY ENTRANCE
GL-01-02-200



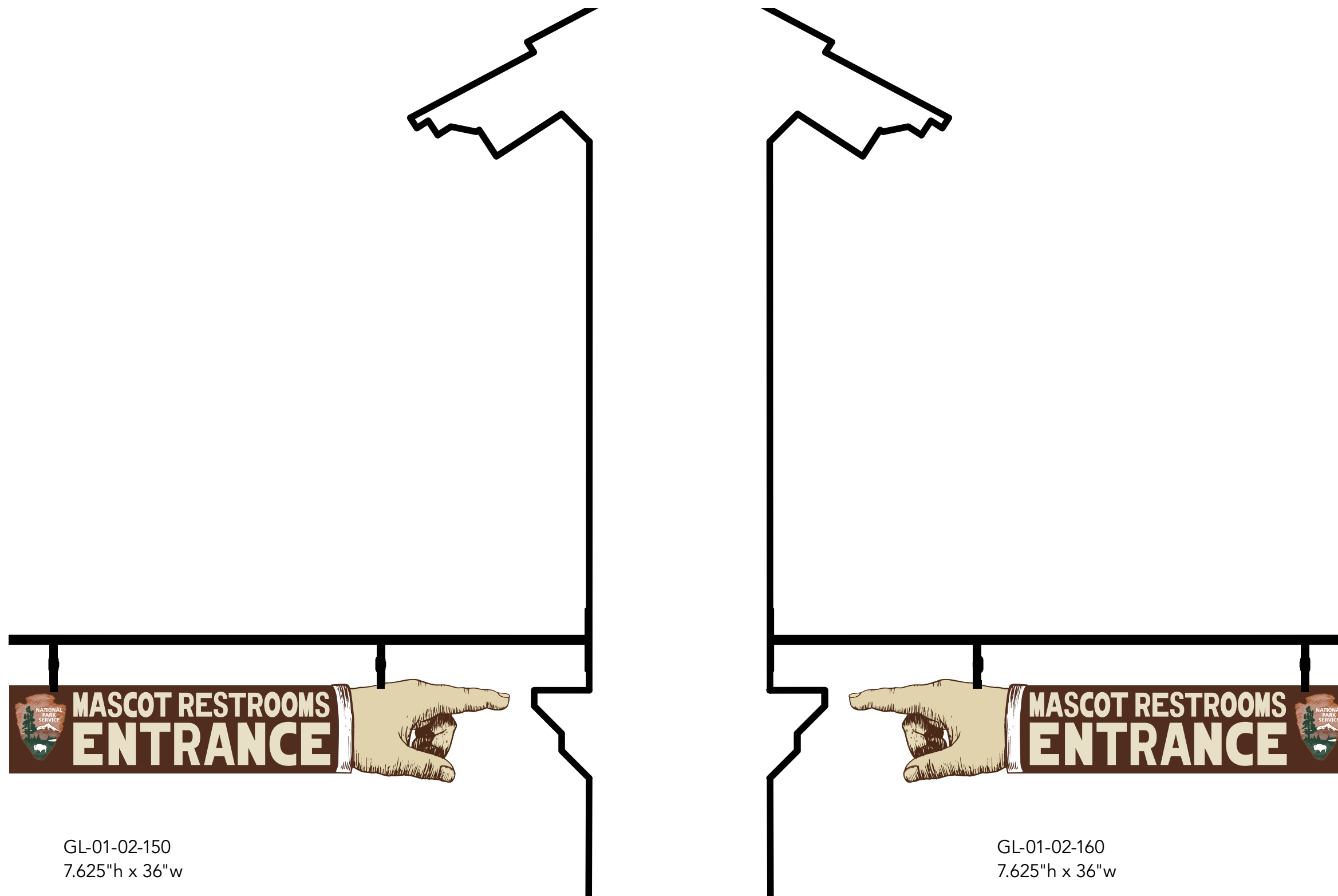
3 ELEVATION @ SCENE
01-02: EXTERIOR SIGN - SIDE
SCALE A: (3/8" = 1'-0")



Primary Text Panel
GL-01-01-100 and GL-01-01-110
19.5"h x 96"w



GL-01-01-200 and GL-01-01-210



GL-01-02-150
7.625"h x 36"w

GL-01-02-160
7.625"h x 36"w

GL-01-02-200
42"h x 42"w

