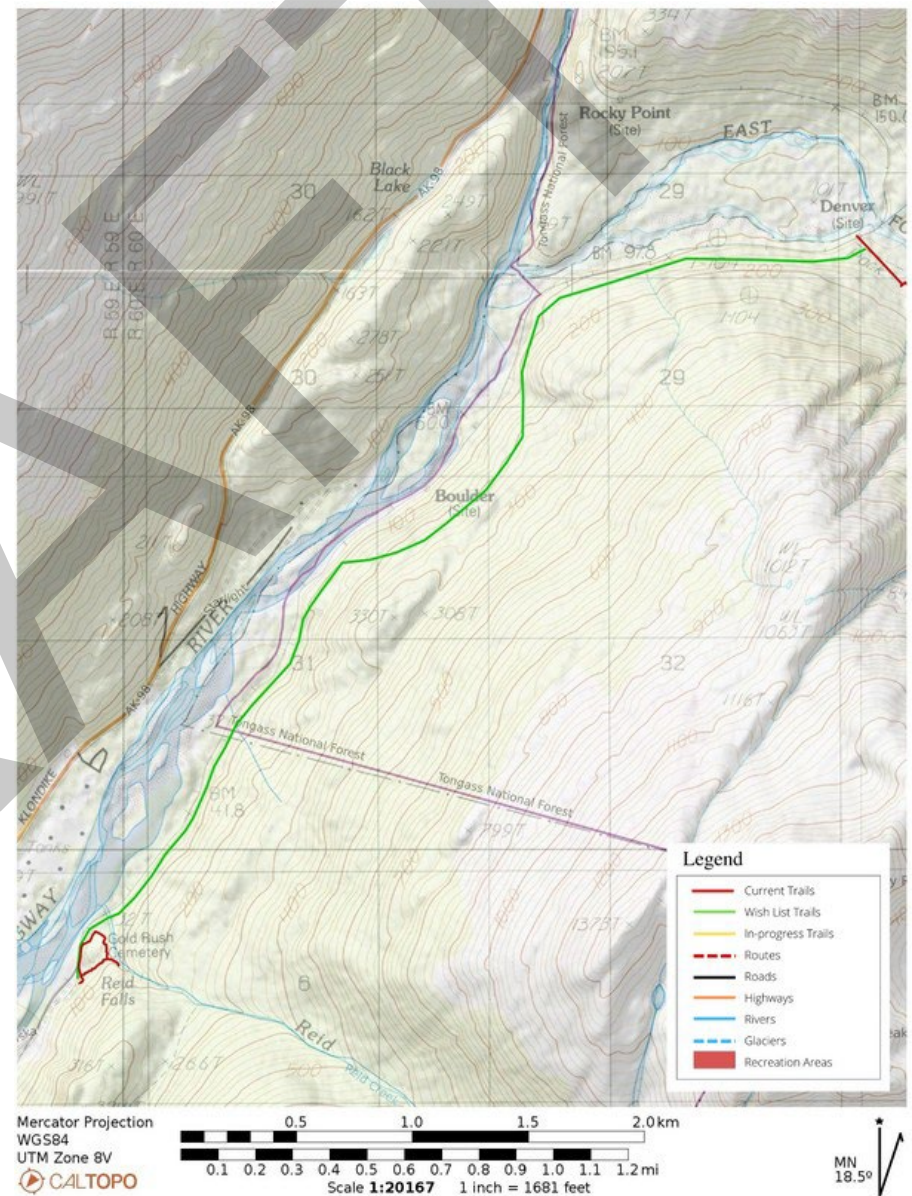


Proposed Project #2

Trail Name	Alaska Road Commission Denver Valley Access Trail
Use	Multi-use
Class	3
Length	3.25mi
Partners	MOS, USFS, WP&YR

Complete trail from Gold Rush Cemetery to the Denver Glacier Trail, providing users with a safe alternative from walking or driving ATVs on the railroad tracks.

This project has been identified in the Statewide SCORP project as a priority for the area. This is part of a larger wish list trail to complete a walking path connecting the harbor to the north end of the valley.

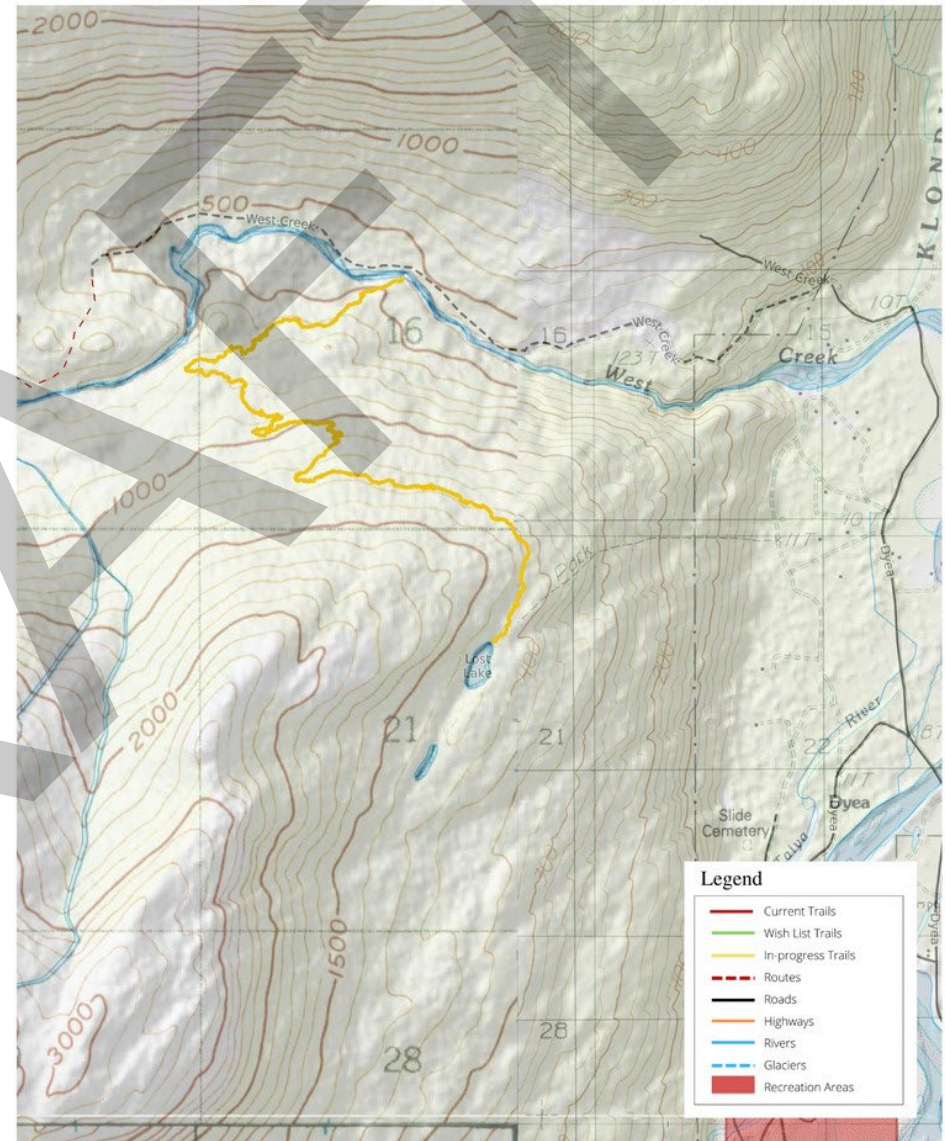


Proposed Project #5

Trail Name	Complete New Lost Lake Trail Access
Use	Multi-use
Class	1-2
Length	3.6mi
Partners	MOS

A route for a new access trail from the West Creek Pedestrian Bridge to Lost Lake was flagged and brushed in 2021. Given the remote location and rapid vegetation growth in the area, immediate funding to complete this project is needed if the work to date is to be preserved.

Lost Lake has been identified as a desirable location for installation of a public use cabin.



Mercator Projection
WGS84
UTM Zone 8V
CALTPOPO

0.5 1.0 1.5 2.0 km
0.1 0.2 0.3 0.4 0.5 0.6 0.7 0.8 0.9 1.0 1.1 1.2 mi
Scale 1:19445 1 inch = 1620 feet

MN
18.50

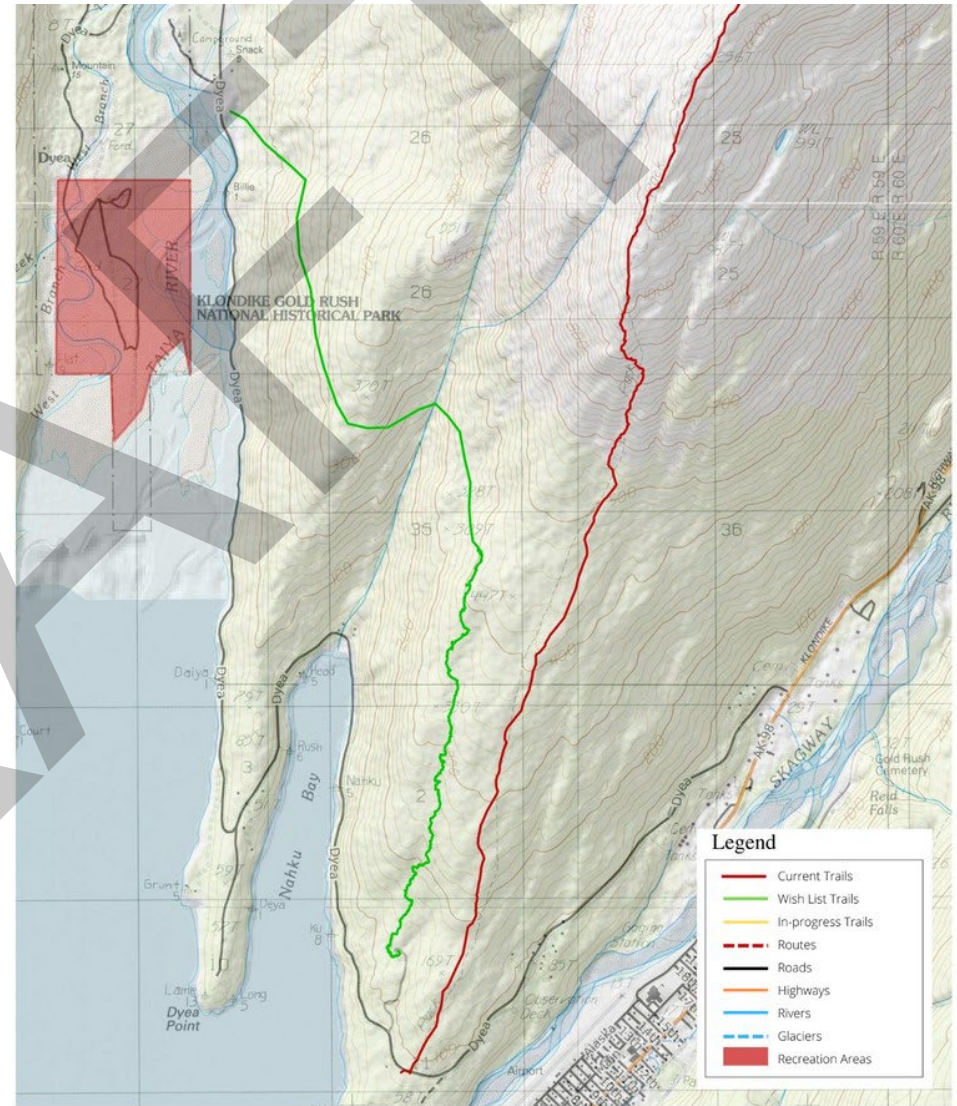
Proposed Project #6

Trail Name	AB Mountain Trail System
Use	Multi-use
Class	1-2
Partners	MOS, DOT, Alaska Mental Health Land Trust

AB Mountain has seen an increase in both hikers and mountain bike users. Parking improvements are needed. User created trails are crossing into residential property. These trails need to be rerouted and possibly expanded. The upper trail needs to be rerouted and reconstructed. There is a possible location for an outhouse facility near trailhead.

The Municipality is currently working with Alaska Mental Health Lands to acquire a portion AB Mountain for housing development. If this occurs, expanding hiking and mountain bike trail development should be included in the planning process of this land acquisition.

A multi-use access trail from the Skagway Rifle Range Road to Dyea has been identified as a highly desirable addition to the Skagway Trails System. Public Works Trails staff has roughly flagged the start of this trail. Additional public input and planning is recommended.



Mercator Projection
WGS84
UTM Zone 8V
CALTPO

0.5 1.0 1.5 2.0 2.5 km
0.5 1.0 1.5 mi
Scale 1:25401 1 inch = 2117 feet

MN 18.5°